

www.afcat.com.na



JUST REFRIGERATION CATALOGUE

+264 83 332 4400 | afcat@african-group.net
c/o Tommie Muller and Kalie Roodt Street, Northern Industrial, Windhoek



Our production facility has been tested and is audited by the South African Bureau of Standards with all products having a standard IEC Rating



Just Refrigeration is ISO 9001 compliant / 14000 compliant with all our products subjected to a thorough and stringent quality check once they come off the production line. Just also has it's own R&D & testing facility to monitor, test and improve the performance of our range.



FRIENDLY

With the market becoming more environmentally conscious, creating 'Green' products and an energy efficient business is of highest importance to Just Refrigeration.

MISSION STATEMENT

To engineer robust, dependable refrigeration equipment that is energy efficient and well priced.

COMPANY BACKGROUND

- > Started in 1997 by the Lloyd Brothers, Chesney & Greg
- > Both Chesney & Greg have extensive knowledge of the refrigeration industry stemming from their father's lifetime of dedication to the industry.
- > The business has grown from humble beginnings into one of South Africa's most respected refrigeration equipment manufacturers.
- > Just makes use of some of the latest technology in its manufacturing process which includes state of the art punching machines and robotic assembly to ensure consistent quality and efficiency.
- > We are proud of what we have achieved so far and look forward to another 25 years of service excellence in the refrigeration market.

SINCE 1997







PRODUCTION EXCELLENCE

- > Newly upgraded 8000m2 factory in Hammarsdale.
- > Green factory with 320A integrated solar system.
- > Our products are SABS / SANS 60335 certified.
- > Certified by TÜV to be fully compliant with ISO 9001 and ISO 14001 standards.
- > Production team of 150 highly-skilled craftspeople.
- > High-tech metal processing equipment.
- > Over 25 years of proven quality and durability.



OUR CUSTOMERS

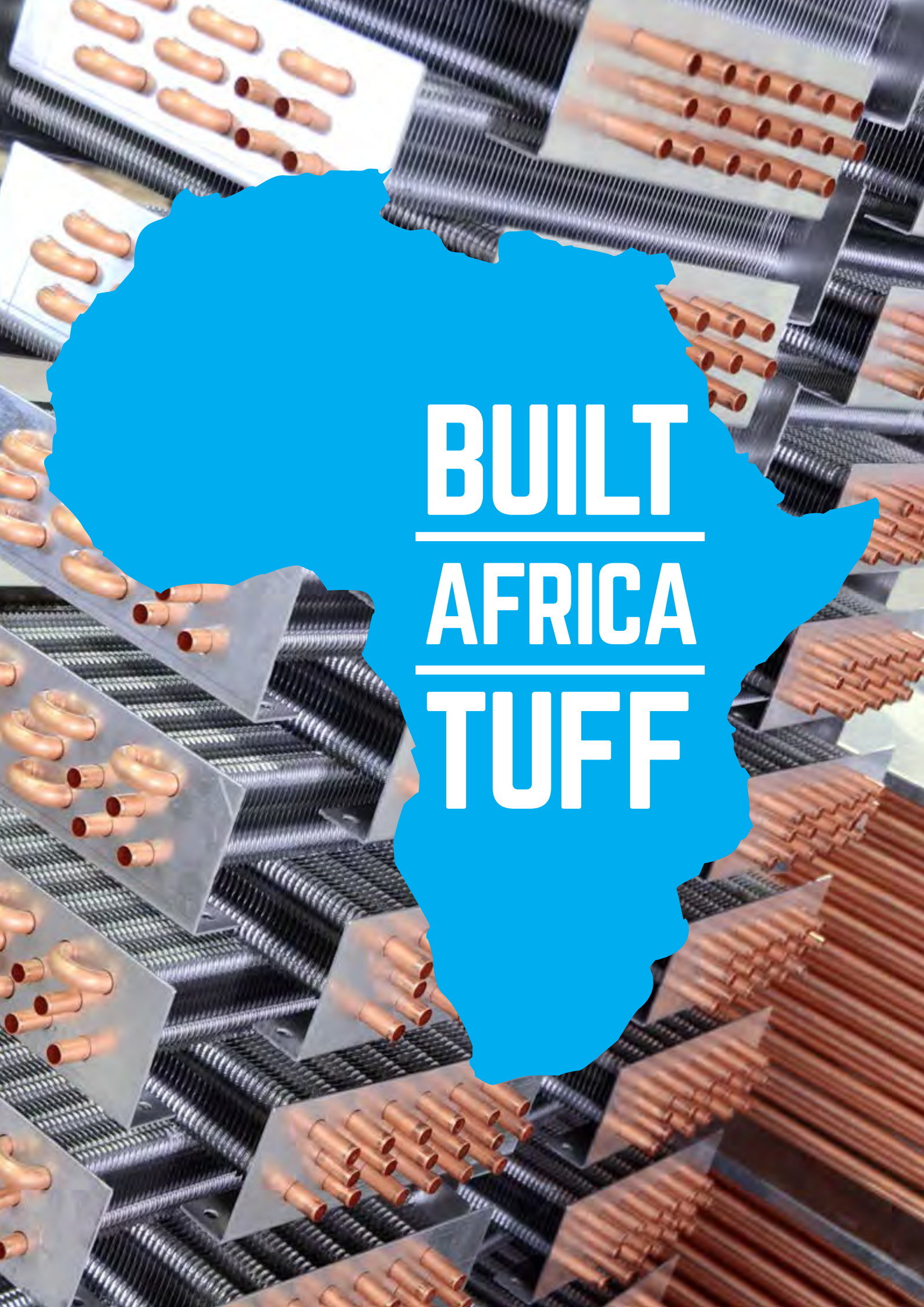




BLUE CHIP RATED

- > With a diverse range of underbars, supermarket cabinets and remote cabinets, Just Refrigeration manufactures and caters for the needs of over 180 listed dealers, as well as most of the blue chip retail groups in SA.
- > We enjoy a proud reputation of quality products, excellent backup service nationwide, based on a highly commendable and honest business ethic. Supplying cross border into Africa and as far afield as Australia.
- > Just Refrigeration has a dedicated spares and service department with numerous contractors available throughout South Africa. Our after sales service, maintenance and warranty of all our products is attended to within 24hrs.





BUILT
AFRICA
TUFF



WHY WE'RE YOUR BEST CHOICE

> LEAD TIMES

We maintain stock of all standard items and have a 2-3 week lead time on custom cabinets.

> OUR RANGE

In addition to our extensive product range, we also have an in house R&D team who can design and develop new concepts and cabinets required by our customers.

> PROUDLY SOUTH AFRICAN

We are a 100% South African owned company with our refrigeration designs geared to Africa's climate and operating conditions.

> OUR QUALITY AND BACK UP SERVICE ON OUR UNITS

Our units all undergo strict quality control with a separately run QC department.

We also have 140 registered service agents on our books to handle any fault on our units in the field after deliveries and line ups.

> OUR PRICE

We constantly check our pricing and negotiate with our suppliers to ensure we can offer our clients the best possible pricing in the market.



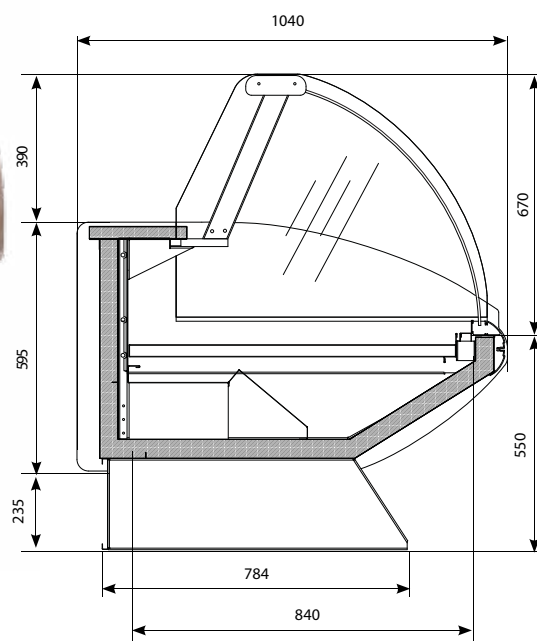


SUPERMARKET

FEATURES:

- Available in curved or square glass
- Optional external colours
- LED lights / wiz lights
- Night curtains / night covers
- Stainless steel bumper rails
- Glass or solid sides
- Adjustable shelves
- Stainless steel work tops for extra durability
- Angled or standard meat and freezer bins

MEAT CASE - CURVED GLASS



	CGM1220SC	CGM1830SC	CGM2440SC
Height	1350mm	1350mm	1350mm
Width	1300mm	2010mm	2520mm
Depth	1100mm	1100mm	1100mm
Height (crated)	1450mm	1450mm	1450mm
Width (crated)	1340mm	2050mm	2570mm
Depth (crated)	1160mm	1160mm	1160mm
Weight – Nett	158kg	218kg	300kg
Weight – Crated	185kg	265kg	345kg
Display Area	0.78m ²	1.37m ²	1.728m ²
Voltage	220-240V/50Hz	220-240V/50Hz	220-240V/50Hz
Amperage	3.8A	4.6A	5.8A
Compressor Watts	584watts	989watts	1250watts
Compressor Refrigerant	R134A	R134A	R134A
Cooling Fans	1	2	3
Temperature Range	-2° to +2°C	-2° to +2°C	-2° to +2°C
Defrost Method	Electric	Electric	Electric

FEATURES

- Front sliding glass for easy cleaning
- Aesthetically pleasing aluminium sections used
- Removable colour coded plastic bumper rail insert
- Stainless Steel dishes supplied with unit
- Forced air cooling
- Adjustable feet for leveling cabinet
- Chromadeck exterior finish
- Stainless steel interior base
- Stainless steel worktop for extra durability
- Rear plug point for electronic scale etc
- Polyurethane foam injection
- Temperature regulation by thermostat
- Automatic defrost
- Light switch
- Top rear sliding doors

TEMPERATURE RANGE: -2° TO +2°C



SUPERMARKET - DELI WARMER



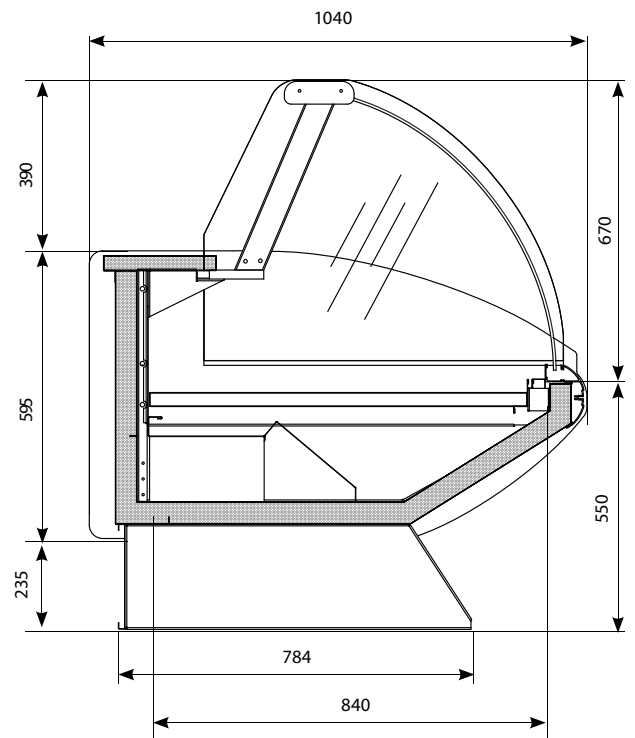
	CGDW1220	CGDW1830	CGDW2440
Height	1350mm	1350mm	1350mm
Width	1300mm	1910mm	2520mm
Depth	1100mm	1100mm	1100mm
Height (crated)	1590mm	1590mm	1590mm
Width (crated)	1420mm	2030mm	2650mm
Depth (crated)	1240mm	1240mm	1240mm
Weight - Nett	127kg	175kg	198kg
Weight - Crated	142kg	225kg	244kg
Display Area	0.78m ²	1.37m ²	1.728m ²
Voltage	220-240V/50Hz	220-240V/50Hz	220-240V/50Hz
Number of Elements	2	2	2
Wattage of Elements	1150 watts	1500 watts	2000 watts
Temperature Range	30° - 75°C (Dry Heat) 30° - 65°C (Wet Heat)	30° - 75°C (Dry Heat) 30° - 65°C (Wet Heat)	30° - 75°C (Dry Heat) 30° - 65°C (Wet Heat)
Number of Full Insert Divisions	3	5	7
Number of Third Insert Divisions	3	5	7

FEATURES

- Front sliding glass for easy cleaning
- Aesthetically pleasing aluminium sections used
- Removable colour coded plastic bumper rail insert
- Adjustable feet for leveling cabinet
- Chromadeck exterior finish
- Stainless steel work top for extra durability
- Polyurethane foam injection
- Temperature regulation by thermostat
- Automatic element burn out protection
- Light switch
- Top rear sliding doors

TEMPERATURE RANGE: 30° TO 75°C

SUPERMARKET - DELI



	CGD1220SC	CGD1830SC	CGD2440SC
Height	1350mm	1350mm	1350mm
Width	1300mm	1910mm	2520mm
Depth	1100mm	1100mm	1100mm
Height (crated)	1590mm	1590mm	1590mm
Width (crated)	1420mm	2030mm	2650mm
Depth (crated)	1240mm	1240mm	1240mm
Weight – Nett	158kg	231kg	260kg
Weight – Crated	185kg	262kg	305kg
Display Area	0.78m ²	1.37m ²	1.73m ²
Voltage	220-240V/50Hz	220-240V/50Hz	220-240V/50Hz
Amperage	4A	4.6A	5.8A
Compressor Wattage	713watts	926watts	1285watts
Compressor Refrigerant	R134A	R134A	R134A
Cooling Fans	1	2	3
Temperature Range	4° to 8°C	4° to 8°C	4° to 8°C
Defrost Method	Forced	Forced	Forced

FEATURES

- Front sliding glass for easy cleaning
- Aesthetically pleasing aluminium sections used
- Removable colour coded plastic bumper rail insert
- Adjustable feet for leveling cabinet
- Chromadeck exterior finish
- Stainless steel work top for extra durability
- Polyurethane foam injection
- Temperature regulation by thermostat
- Automatic element burn out protection
- Light switch
- Top rear sliding doors
- Two tier adjustable glass shelving (ambient)

TEMPERATURE RANGE: 4° TO 8°C



MEAT CASE - ECONO



DIMENSIONS	UoM	CG1830MC/AE	CG2440MC/AE
Width	mm	1915	2525
Depth	mm	1100	1100
Height	mm	1350	1350
Weight	Kg	290	375
Total Display area	m ²	1,22	2,06
Foot print area	m ²	2,21	3,03
Evaporator		Fan Assist	Fan Assist
Condenser		Fan Assist	Fan Assist
Cabinet Temperature	°C	0°C to +4°C	0°C to + 4°C
Refrigeration Capacity (at -10°C)	watt	1364	1364
Rating Power	watt	941	998
Lighting		1 x 23W 1500mm LED	2 x 14w 900mm LED
Antimist Heater		Yes	Yes
Expansion Device		Capillary Tube	Capillary Tube
Thermostat		Electronic Controller	Electronic Controller

FEATURES

- Running temperature: 0°C/+04°C
- Ambient Conditions: 25°C - 60% RH
- Front sliding glass for easy cleaning
- Aesthetically pleasing aluminium sections used
- Solid patchends
- Rear sliding glass
- Trolley bumper fitted as standard
- Adjustable feet for levelling cabinet
- Chormadek exterior finish
- Stainless steel interior base
- Stainless steel work top for extra durability
- Polyurethane foam injected
- Can be used as a deli or a meat cabinet
- Temperature regulation by thermostat
- Forced air cooling
- Automatic defrost
- Rear plug point for electronic scale

OPTIONAL EXTRAS

- Optional colour coded bumper rail insert
- Meat Bins optional extra, 1.8m takes 6, 2.4m takes 8

TEMPERATURE RANGE: 0°C – 4°C



LOW GLASS CABINETS

MEAT

TEMPERATURE RANGE: -2° TO +2°C

FEATURES

- Aesthetically pleasing aluminium sections used
- Removable colour coded plastic bumper rail insert
- Forced air cooling
- Adjustable feet for leveling cabinet
- Chromadeck exterior finish
- Stainless steel interior base
- Stainless steel worktop for extra durability
- Rear plug point for electronic scale etc
- Polyurethane foam injection
- Temperature regulation by thermostat
- Automatic defrost

	SGM1830SC/LG
Height	900mm
Width	1920mm
Depth	1220mm
Height (crated)	1010mm
Width (crated)	2050mm
Depth (crated)	1300mm
Weight – Nett	218Kgs
Weight – Crated	265Kgs
Display Area	1.37m2
Voltage	220-240V/50Hz
Amperage	4.6A
Compressor Watts	989watts
Compressor Refrigerant	R134A
Cooling Fans	2
Temperature Range	-2° to +2°C
Defrost Method	Electric



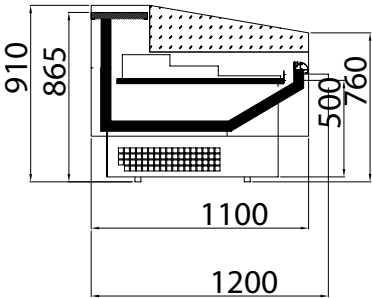
DELI

TEMPERATURE RANGE: 2° TO 8°C

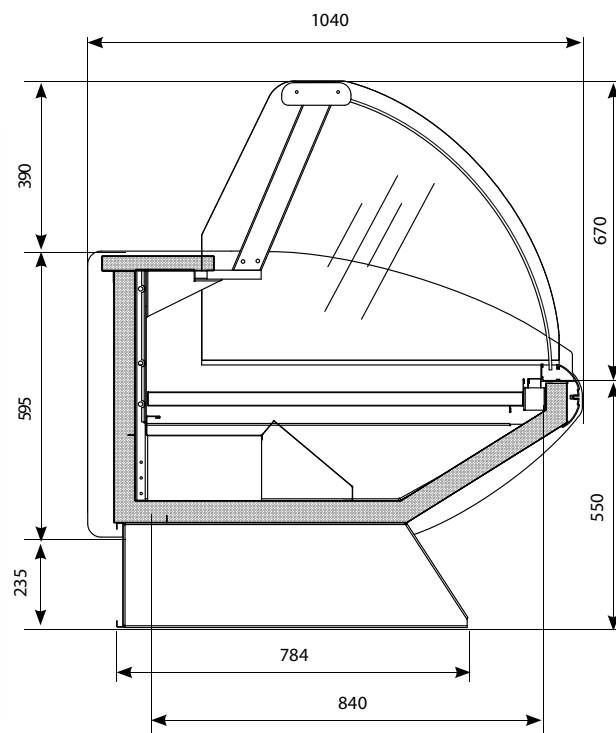
FEATURES

- Aesthetically pleasing aluminium sections used
- Removable colour coded plastic bumper rail insert
- Forced air cooling
- Adjustable feet for leveling cabinet
- Chromadeck exterior finish
- Stainless steel work top for extra durability
- Polyurethane foam injection
- Temperature regulation by thermostat

	SGD1830SC-LG
Height	900mm
Width	1920mm
Depth	1220mm



DELI FREEZER - CURVED GLASS



	CGDF1830SC
Height	1350mm
Width	1910mm
Depth	1100mm
Height (crated)	1590mm
Width (crated)	2030mm
Depth (crated)	1240mm
Weight – Nett	230kg
Weight – Crated	278kg
Display Area	1.37m ²
Voltage	220-240V/50Hz
Amperage	7A
Compressor Wattage	1072
Compressor Refrigerant	R404
Wattage of Defrost Element	1000 watts
Temperature Range	-14° to -18°C
Defrost Method	Electric

FEATURES

- Front sliding glass for easy cleaning
- Aesthetically pleasing aluminium sections used
- Removable colour coded plastic bumper rail insert
- Forced air cooling
- Adjustable feet for leveling cabinet
- Chromadeck exterior finish
- Stainless steel work top for extra durability
- Polyurethane foam injection
- Temperature regulation by thermostat
- Automatic defrost
- Top rear sliding doors
- Light switch

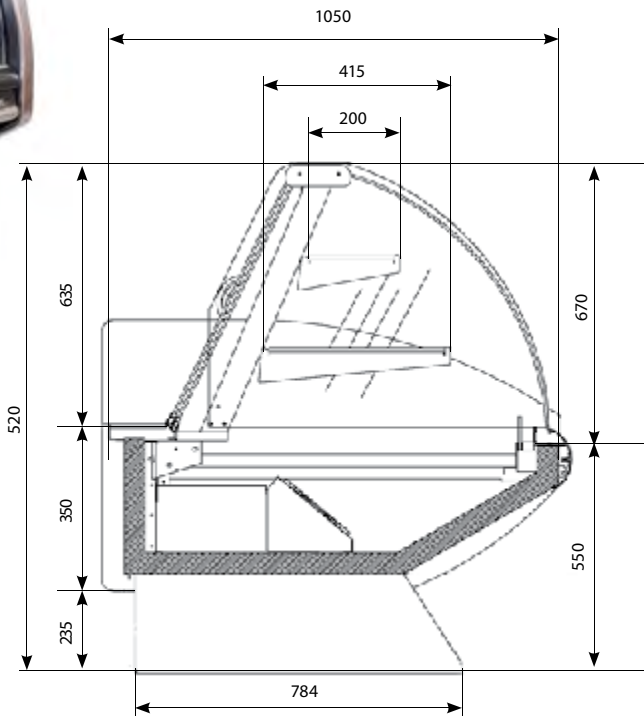
TEMPERATURE RANGE: -14° TO -18°C



PASTRY CABINET - CURVED GLASS, REFRIGERATED



**TEMPERATURE RANGE: 6° TO 10°C
AVAILABLE IN AMBIENT**



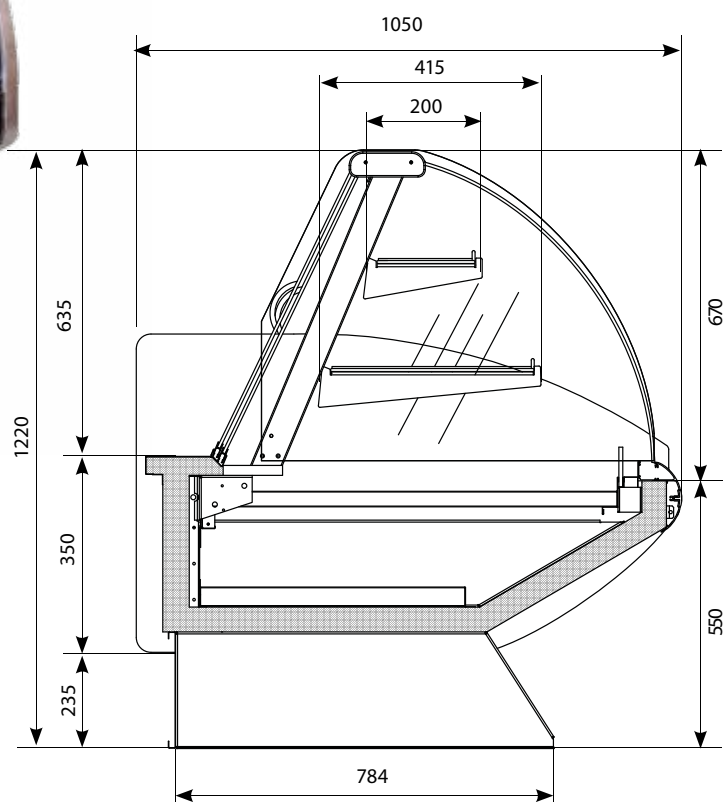
REFRIGERATED	CGPAT1220SC	CGPAT1830SC	CGPAT2440SC
Height	1350mm	1350mm	1350mm
Width	1300mm	2010mm	2520mm
Depth	1100mm	1100mm	1100mm
Height (crated)	1450mm	1450mm	1450mm
Width (crated)	1340mm	2050mm	2570mm
Depth (crated)	1160mm	1160mm	1160mm
Weight – Nett	158kg	235kg	300kg
Weight – Crated	185kg	285kg	345kg
Display Area	1.14m ²	1.9m ²	2.45m ²
Voltage	220-240V/50Hz	220-240V/50Hz	220-240V/50Hz
Amperage	4A	4.6A	5.8A
Compressor Watts	713 watts	926 watts	1285watts
Compressor Refrigerant	R134A	R134A	R134A
Cooling Fans	1	2	3
Temperature Range	6° to 10°C	6° to 10°C	6° to 10°C
Defrost Method	Electric	Electric	Electric

FEATURES

- Front sliding glass for easy cleaning
- Aesthetically pleasing aluminium sections used
- Removable colour coded plastic bumper rail insert
- Sliding bottom loading drawers as standard
- Adjustable feet for leveling cabinet
- Chromadeck exterior finish
- Stainless steel worktop for extra durability
- Polyurethane foam injection
- Temperature regulation by thermostat
- Automatic defrost
- Light switch
- Two tier adjustable glass shelving (Ambient)
- Top rear sliding doors



PIE WARMER - CURVED GLASS



	CGPW1220
Height	1350mm
Width	1300mm
Depth	1100mm
Height (crated)	1590mm
Width (crated)	1420mm
Depth (crated)	1240mm
Weight - Nett	136kg
Weight - Crated	165kg
No. of Shelves	2
Voltage	220-240V/50Hz
Number of Elements	2
Wattage of Elements	1400watts
Amperage	6A
Temperature Range	30° to 65°C

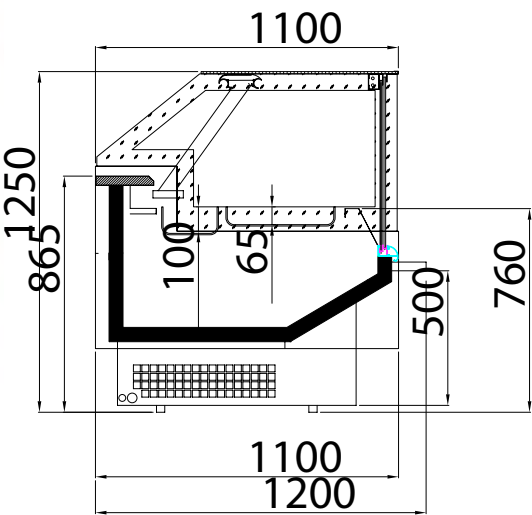
FEATURES

- Front sliding glass for easy cleaning
- Aesthetically pleasing aluminium sections used
- Removable colour coded plastic bumper rail insert
- Adjustable feet for leveling cabinet
- Chromadeck exterior finish
- Stainless steel worktop for extra durability
- Polyurethane foam injection
- Temperature regulation by thermostat
- Forced air circulation for even heat
- Light switch

TEMPERATURE RANGE: 30° TO 65°C



DELI WARMER - SQUARE GLASS



	SGDW1220	SGDW1830	SGDW2440
Height	1350mm	1350mm	1350mm
Width	1300mm	1910mm	2520mm
Depth	1100mm	1100mm	1100mm
Height (crated)	1590mm	1590mm	1590mm
Width (crated)	1420mm	2030mm	2650mm
Depth (crated)	1240mm	1240mm	1240mm
Weight – Nett	127kg	175kg	198kg
Weight – Crated	142kg	225kg	244kg
Display Area	0.78m ²	1.37m ²	1.728m ²
Voltage	220-240V/50Hz	220-240V/50Hz	220-240V/50Hz
Number of Elements	2	2	2
Wattage of Elements	1150 watts	1500 watts	2000 watts
Temperature Range	30° – 75°C (Dry Heat) 30° – 65°C (Wet Heat)	30° – 75°C (Dry Heat) 30° – 65°C (Wet Heat)	30° – 75°C (Dry Heat) 30° – 65°C (Wet Heat)
Number of Full Insert Divisions	3	5	7
Number of Third Insert Divisions	3	5	7

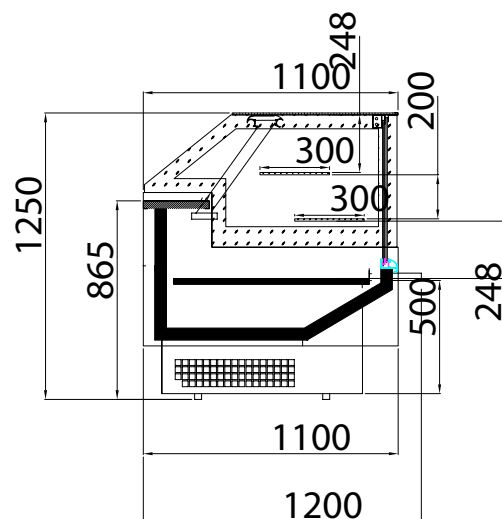
FEATURES

- Front sliding glass for easy cleaning
- Aesthetically pleasing aluminium sections used
- Removable colour coded plastic bumper rail insert
- Adjustable feet for leveling cabinet
- Chromadeck exterior finish
- Stainless steel work top for extra durability
- Polyurethane foam injection
- Temperature regulation by thermostat
- Top rear sliding doors

TEMPERATURE RANGE: 50° TO 70°C



DELI - SQUARE GLASS



	SGD1220SC	SGD1830SC	SGD2440SC
Height	1350mm	1350mm	1350mm
Width	1300mm	1910mm	2520mm
Depth	1100mm	1100mm	1100mm
Height (crated)	1590mm	1590mm	1590mm
Width (crated)	1420mm	2030mm	2650mm
Depth (crated)	1240mm	1240mm	1240mm
Weight – Nett	158Kgs	231Kgs	260Kgs
Weight – Crated	185Kgs	262Kgs	305Kgs
Display Area	0.78m ²	1.37m ²	1.73m ²
Voltage	220-240V/50Hz	220-240V/50Hz	220-240V/50Hz
Amperage	4A	4.6A	5.8A
Compressor Wattage	713watts	926watts	1285watts
Compressor Refrigerant	R134A	R134A	R134A
Cooling Fans	1	2	3
Temperature Range	4° to 8°C	4° to 8°C	4° to 8°C
Defrost Method	Forced	Forced	Forced

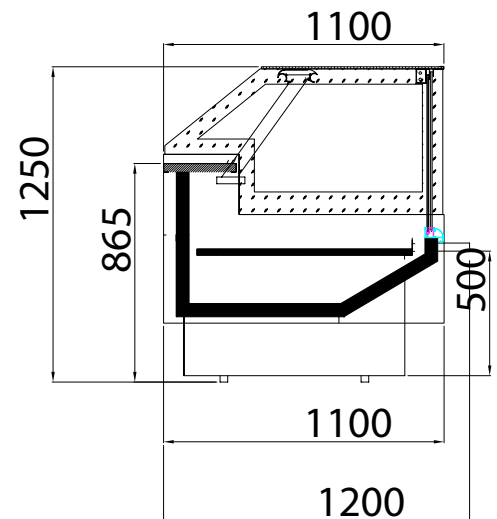
FEATURES

- Front sliding glass for easy cleaning
- Aesthetically pleasing aluminium sections used
- Removable colour coded plastic bumper rail insert
- Forced air cooling
- Adjustable feet for leveling cabinet
- Chromadeck exterior finish
- Stainless steel work top for extra durability
- Polyurethane foam injection
- Temperature regulation by thermostat
- Automatic defrost
- Top rear sliding doors

TEMPERATURE RANGE: 4° TO 8°C



MEAT CASE - SQUARE GLASS



	SGM1220SC	SGM1830SC	SGM2440SC
Height	1350mm	1350mm	1350mm
Width	1300mm	2010mm	2520mm
Depth	1100mm	1100mm	1100mm
Height (crated)	1450mm	1450mm	1450mm
Width (crated)	1340mm	2050mm	2570mm
Depth (crated)	1160mm	1160mm	1160mm
Weight - Nett	158Kgs	218Kgs	300Kgs
Weight - Crated	185Kgs	265Kgs	345Kgs
Display Area	0.78m2	1.37m2	1.728m2
Meat Bins	4	6	8
Voltage	220-240V/50Hz	220-240V/50Hz	220-240V/50Hz
Amperage	3.8A	4.6A	5.8A
Compressor Watts	584watts	989watts	1250watts
Compressor Refrigerant	R134A	R134A	R134A
Cooling Fans	1	2	3
Temperature Range	-2° to +2°C	-2° to +2°C	-2° to +2°C
Defrost Method	Electric	Electric	Electric

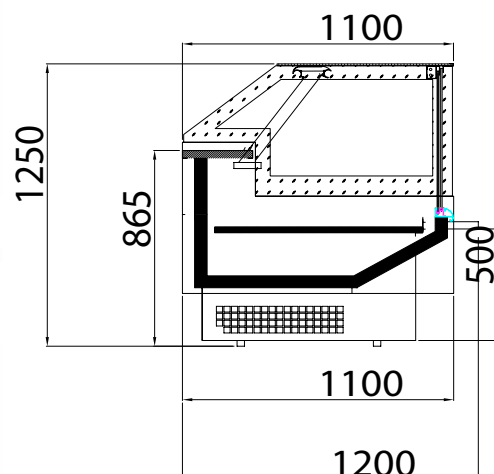
FEATURES

- Front sliding glass for easy cleaning
- Aesthetically pleasing aluminium sections used
- Removable colour coded plastic bumper rail insert
- Stainless Steel dishes supplied with unit
- Forced air cooling
- Adjustable feet for leveling cabinet
- Chromadeck exterior finish
- Stainless steel interior base
- Stainless steel worktop for extra durability
- Rear plug point for electronic scale etc
- Polyurethane foam injection
- Temperature regulation by thermostat
- Automatic defrost
- Light switch
- Top rear sliding doors

TEMPERATURE RANGE: -2° TO +2°C



DELI FREEZER - SQUARE GLASS



	S6DF1830SC
Height	1350mm
Width	1910mm
Depth	1100mm
Height (crated)	1590mm
Width (crated)	2030mm
Depth (crated)	1240mm
Weight – Nett	230kg
Weight – Crated	278kg
Display Area	1.37m ²
Steel Bins	6
Voltage	220-240V/50Hz
Amperage	7A
Compressor Wattage	1072
Compressor Refrigerant	R404
Wattage of Defrost Element	1000 watts
Temperature Range	-14° to -18°C
Defrost Method	Electric

FEATURES

- Front sliding glass for easy cleaning
- Aesthetically pleasing aluminium sections used
- Removable colour coded plastic bumper rail insert
- Forced air cooling
- Adjustable feet for leveling cabinet
- Chromadeck exterior finish
- Stainless steel work top for extra durability
- Polyurethane foam injection
- Temperature regulation by thermostat
- Automatic defrost
- Top rear sliding doors
- Light switch

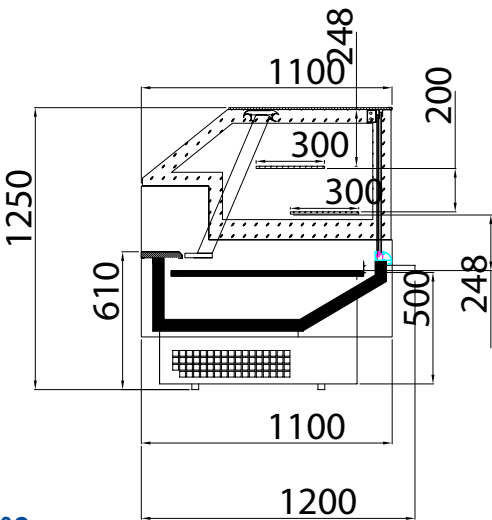
TEMPERATURE RANGE: -14° TO -18°C



PASTRY CABINET REFRIGERATED - SQUARE GLASS



**TEMPERATURE RANGE: 6° TO 10°C
AVAILABLE IN AMBIENT**



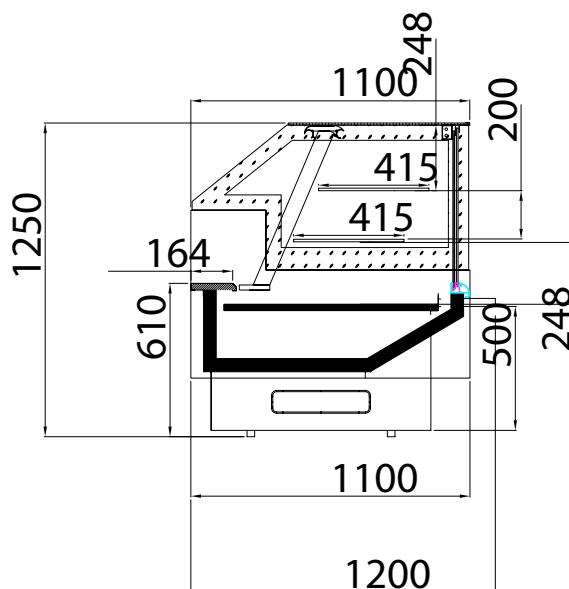
REFRIGERATED	SGPAT1220SC	SGPAT1830SC	SGPAT2440SC
Height	1350mm	1350mm	1350mm
Width	1300mm	2010mm	2520mm
Depth	1100mm	1100mm	1100mm
Height (crated)	1450mm	1450mm	1450mm
Width (crated)	1340mm	2050mm	2570mm
Depth (crated)	1160mm	1160mm	1160mm
Weight – Nett	158Kgs	235Kgs	300Kgs
Weight – Crated	185Kgs	285Kgs	345Kgs
Display Area	1.14m2	1.9m2	2.45m2
Voltage	220-240V/50Hz	220-240V/50Hz	220-240V/50Hz
Amperage	4A	4.6A	5.8A
Compressor Watts	713 watts	926 watts	1285watts
Compressor Refrigerant	R134A	R134A	R134A
Cooling Fans	1	2	3
Temperature Range	6° to 10°C	6° to 10°C	6° to 10°C
Defrost Method	Electric	Electric	Electric

FEATURES

- Front sliding glass for easy cleaning
- Aesthetically pleasing aluminium sections used
- Removable colour coded plastic bumper rail insert
- Sliding bottom loading drawers as standard
- Adjustable feet for leveling cabinet
- Chromadeck exterior finish
- Stainless steel worktop for extra durability
- Polyurethane foam injection
- Temperature regulation by thermostat
- Automatic defrost
- Light switch
- Two tier adjustable glass shelving (Ambient)
- Top rear sliding doors



PIE WARMER - SQUARE GLASS



	S6PW1220
Height	1350mm
Width	1300mm
Depth	1100mm
Height (crated)	1590mm
Width (crated)	1420mm
Depth (crated)	1240mm
Weight – Nett	136Kgs
Weight – Crated	165Kgs
No. of Shelves	2
Voltage	220-240V/50Hz
Number of Elements	2
Wattage of Elements	1400watts
Amperage	6A
Wattage of Defrost Element	1000 watts
Temperature Range	30° to 65°C
Defrost Method	Electric

FEATURES

- Front sliding glass for easy cleaning
- Aesthetically pleasing aluminium sections used
- Removable colour coded plastic bumper rail insert
- Adjustable feet for leveling cabinet
- Chromadeck exterior finish
- Stainless steel worktop for extra durability
- Polyurethane foam injection
- Temperature regulation by thermostat
- Forced air circulation for even heat
- Light switch

TEMPERATURE RANGE: 30° TO 65°C

WALL CHILLER - JC



FEATURES	
Running Temperature	2°C/+6°C
Ambient Conditions	25°C - 60% RH
Colour Exterior	Stainless Steel
Colour Interior	Black Chromadek
Solid Patchends External	Stainless Steel
Solid Patchends Internal	Mirror
Standard with night blinds	YES
Trolley Bumpers	YES
Adjustable Shelves	YES
Self-Contained cabinets:	2m and 2.5m to be wired into an isolator

DIMENSIONS		UoM	4FT	6FT	8FT
Length	mm (External)		1270	1970	2470
	mm (Internal)		1200	1900	2400
Height	mm (External)		2050	2050	2050
	mm (Internal)		1250	1250	1250
Depth	mm (External)		1065	1065	1065
	mm (Internal)		610	610	610
Shelf Size and Quantity	Qty x W x D		4 X 1190 X 450	8 X 945 X 450	8 X 1199 X 450
Deck Tray Size and Quantity	Qty x W x D		2 X 600 X 610	2 X 950 X 610	4 X 600 X 610
Weight	Kg		280	445	540
Visual Area Front	m²		1,5	2,4	3
Total display area	m²		2,88	4,56	5,8
Footprint area	m²		1,35	2,18	2,7
Lighting	nr x watt		1 x 18W 900mm LED	2 x 18W 900mm LED	2 x 14W 900mm LED
Nr defrost in 24h	nr x 24h		6 @ 20 minutes	6 @ 20 minutes	3 @ 20 minutes

OPTIONAL EXTRAS

- Under shelf lighting
- Shelf fences
- Polony Hooks
- Pink LED Butchery lights
- Acrylic doors
- Branding

	UoM	4FT	6FT	8FT
Refrigeration capacity @ -10°C / 45°C	watt	2194	3884	5312
Refrigeration Gas Charge	Type/KG	R404a / 2.2	R404a / 1.5 X 2	R404a / 1.5 X 2
Rating power - Including heating elements	Watts	2370	2608	2970
	Amps	12,07	13,63	12,91
Evaporation tray heater	Watts	850 W	2 X 850 W	2 X 850 W
	Amps	3,7	7,4	7,4
Management Device / Thermostat	Type	Electronic Controller	Electronic Controller	Electronic Controller
Defrost Heater	nr.x watt	N/A Free Cycle Fan	N/A Free Cycle Fan	N/A Free Cycle Fan
Antimist Heater	Yes / No	No	No	No
Expansion Device	Type	Capillary Tube	Capillary Tube	Capillary Tube
Evaporator	Type	Fan Assist	Fan Assist	Fan Assist
Condenser	Type	Fan Assist	Fan Assist	Fan Assist
Compressor	Type	MBP/HBP	MBP/HBP	MBP /HBP



WALL CHILLER - JCGW & JCGB



FEATURES

Running Temperature	2°C/+6°C
Ambient Conditions	25°C - 60% RH
Colour Exterior	White Chromadek
Colour Interior	White Chromadek
Glass Screened Patchends	White
Standard with night blinds	YES
Trolley Bumpers	YES
Adjustable Shelves	YES
Self-Contained cabinets:	2m and 2.5m to be wired into an isolator

DIMENSIONS	UoM	4FT	6FT	8FT
Length	mm (External)	1270	1970	2470
	mm (Internal)	1200	1900	2400
Height	mm (External)	2050	2050	2050
	mm (Internal)	1250	1250	1250
Depth	mm (External)	1065	1065	1065
	mm (Internal)	610	610	610
Shelf Size and Quantity	Qty x W x D	4 X 1190 X 450	8 X 945 X 450	8 X 1199 X 450
Deck Tray Size and Quantity	Qty x W x D	2 X 600 X 610	2 X 950 X 610	4 X 600 X 610
Weight	Kg	280	445	540
Visual Area Front	m²	1,5	2,4	3
Visual Area Sides	m²	0,8	0,8	0,8
Total display area	m²	2,88	4,56	5,8
Footprint area	m²	1,35	2,18	2,7
Lighting	nr x watt	1 x 18W 900mm LED	2 x 18W 900mm LED	2 x 14W 900mm LED
Nr defrost in 24h	nr x 24h	6 @ 20 minutes	6 @ 20 minutes	3 @ 20 minutes

OPTIONAL EXTRAS

- Under shelf lighting
- Shelf fences
- Polony Hooks
- Pink LED Butchery lights
- Branding

	UoM	4FT	6FT	8FT
Refrigeration capacity @ -10°C / 45°C	watt	2194	3884	5312
Refrigeration Gas Charge	Type/KG	R404a / 2.2	R404a / 1.5 X 2	R404a / 1.5 X 2
Rating power - Including heating elements	Watts	2370	2608	2970
	Amps	12,07	13,63	12,91
Evaporation tray heater	Watts	850 W	2 X 850 W	2 X 850 W
	Amps	3,7	7,4	7,4
Management Device / Thermostat	Type	Electronic Controller	Electronic Controller	Electronic Controller
Defrost Heater	nr.x watt	N/A Free Cycle Fan	N/A Free Cycle Fan	N/A Free Cycle Fan
Antimist Heater	Yes / No	No	No	No
Expansion Device	Type	Capillary Tube	Capillary Tube	Capillary Tube
Evaporator	Type	Fan Assist	Fan Assist	Fan Assist
Condenser	Type	Fan Assist	Fan Assist	Fan Assist
Compressor	Type	MBP/HBP	MBP/HBP	MBP/HBP



WALL CHILLER LOW BOY - COLD

OPTIONAL EXTRAS

- Shelf fences
- Polony Hooks
- Pink LED Butchery lights
- Branding

FEATURES	
Running Temperature	2°C/+6°C
Ambient Conditions	25°C - 60% RH
Colour Exterior	Black Chromadek
Colour Interior	Black Chromadek
Glass Screened Patchends	Black
Trolley Bumpers	YES
Adjustable Shelves	YES
Self Contained Cabinet	YES

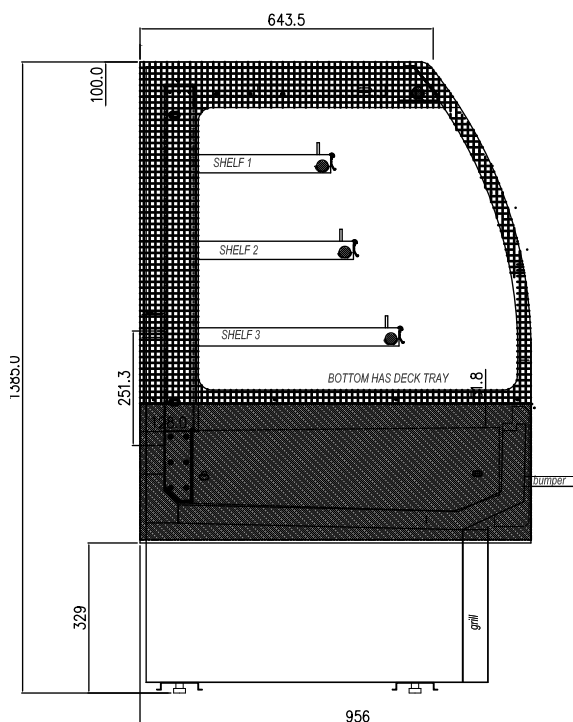
DIMENSIONS	UoM	3FT
Length	mm (External)	1020
	mm (Internal)	950
Height	mm (External)	1385
	mm (Internal)	720
Depth	mm (External)	970
	mm (Internal)	605
Shelf Size and Quantity	Qty x W x D	1 X 945 X 300
		1 X 945 X 350
		1 X 945 X 450
Deck Tray Size and Quantity	Qty x W x D	1 X 945 X 600
Weight	Kg	150
Visual Area Front	m²	0,95
Visual Area Sides	m²	0,4
Total display area	m²	1,6
Footprint area	m²	0,97
Lighting	nr x watt	4 X 9W 600mm LED
Nr defrost in 24h	nr x 24h	6 @ 20 minutes



	UoM	3FT
Refrigeration capacity @ -10°C / 45°C	watt	1942
Refrigeration Gas Charge	Type/KG	R404a / 1.1
Rating power - Including heating elements	Watts	2154
	Amps	10,52
Evaporation tray heater	Watts	850 W
	Amps	3,7
Management Device / Thermostat	Type	Electronic Controller
Defrost Heater	nr.x watt	N/A Free Cycle Fan
Antimist Heater	Yes / No	Yes
Expansion Device	Type	Capillary Tube
Evaporator	Type	Fan Assist
Condenser	Type	Fan Assist
Compressor	Type	MBP/HBP



WALL CHILLER LOW BOY - HOT



DIMENSIONS	UoM	3FT
Length	mm (External)	1020
	mm (Internal)	950
Height	mm (External)	1385
	mm (Internal)	720
Depth	mm (External)	970
	mm (Internal)	605
Shelf Size and Quantity	Qty x W x D	1 X 945 X 300 1 X 945 X 350 1 X 945 X 450
Deck Tray Size and Quantity	Qty x W x D	1 X 945 X 600
Weight	Kg	150
Visual Area Front	m ²	0,95
Visual Area Sides	m ²	0,4
Total display area	m ²	1,6
Footprint area	m ²	1,1
Lighting	nr x watt	4 X 9W 600mm LED
Heating Wire	nr x ohm	HE15-OHM/1100mm - 3x32W
Heating Elements	nr x watt	2 x 1000 watt
Air Circulation	nr x watt	2 x 19 watt
Normal Rating Power	Watts	2170
Management Device / Thermostat	Type	Electronic Controller

FEATURES

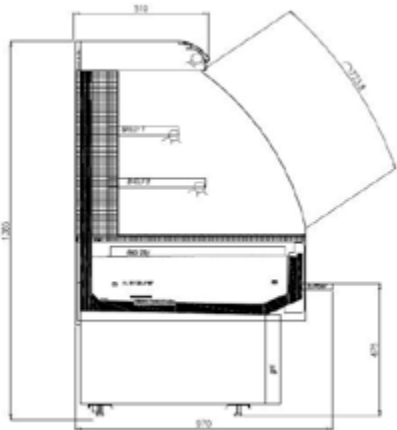
Running Temperature	50°C / 70°C
Colour Exterior	Black Chromadek
Colour Interior	Black Chromadek Stainless Steel Shelves
Glass Screened Patchends	Black
Trolley Bumpers	YES
Adjustable Shelves	YES
Self Contained Cabinet	YES

OPTIONAL EXTRAS

- Shelf fences
- Polony Hooks
- Pink LED Butchery lights
- Branding



CASCADE



DIMENSIONS	UoM	CAS200GB	CAS250GB
Length	mm [External]	1970	2470
	mm [Internal]	1900	2400
Height	mm [External]	1385	1385
	mm [Internal]	610	610
Depth	mm [External]	970	970
	mm [Internal]	605	605
Shelf Size and Quantity	Qty x W x D	2 X 950 X 350 - 2 X 950 X 450	2 X 1200 X 350 - 2 X 1200 X 450
Deck Tray Size and Quantity	Qty x W x D	2 X 950 X 603	2 X 350 X 1200 - 2 X 450 X 1200
Weight	Kg	400	415
Visual Area Front	m ²	1,37	1,7
Visual Area Sides	m ²	0,4	0,4
Total display area	m ²	2,66	3,5
Footprint area	m ²	1,91	3,5
Lighting	nr x watt	6 x 14W 900mm LED	6 x 14W 900mm LED
Nr defrost in 24h	nr x 24h	6 @ 20 minutes	6 @ 20 minutes
Refrigeration capacity @ -10°C / 45°C	watt	3884	3884
Refrigeration Gas Charge	Type/KG	R404a / 1.2 X 2	R404a / 1.5 X 2
Rating power - Excluding heating elements	Watts	2608	2608
	Amps	13,63	13,63
Evaporation tray heater - own power supply	Watts	2 X 850 W	2 X 850 W
	Amps	7,4	7,4
Management Device / Thermostat	Type	Electronic Controller	Electronic Controller
Defrost Heater	nr.x watt	N/A Free Cycle Fan	N/A Free Cycle Fan
Antimist Heater	Yes / No	No	No
Expansion Device	Type	Capillary Tube	Capillary Tube
Evaporator	Type	Fan Assist	Fan Assist
Condenser	Type	Fan Assist	Fan Assist
Compressor	Type	MBP/HBP	MBP / HBP

FEATURES

Running Temperature
Ambient Conditions
Colour Exterior
Colour Interior
Glass Screened Patchends
Trolley Bumpers
Adjustable Shelves

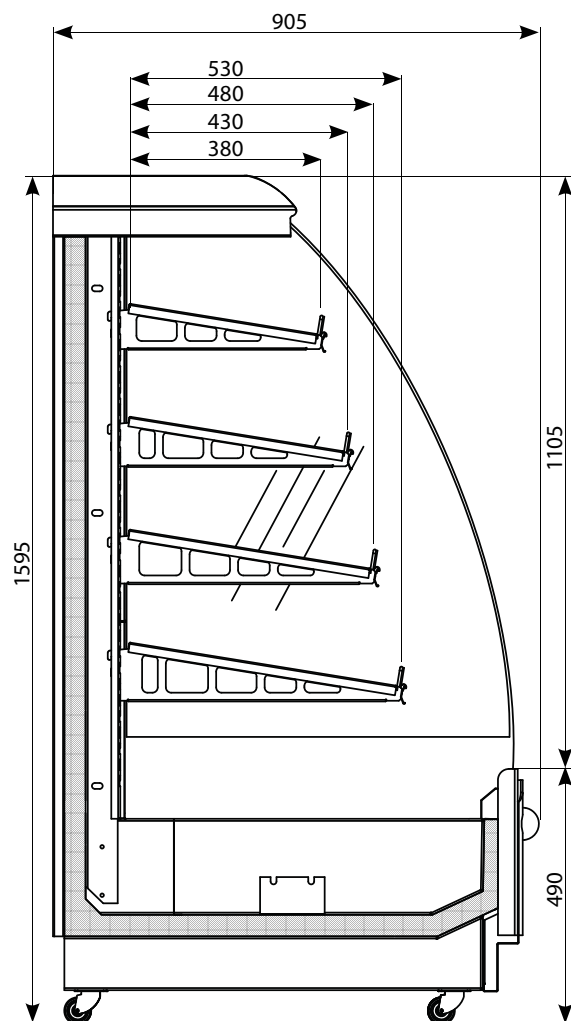
2°C/+6°C
25°C - 60% RH
Black Chromadek
Black Chromadek
Black

OPTIONAL EXTRAS

- Shelf fences
- Polony Hooks
- Pink LED Butchery lights



CHICKEN WARMER - UPRIGHT



DIMENSIONS	UoM	UCW1000G
Length	mm	1000
Width	mm	905
Height	mm	1595
Thickness of end	mm	30
Gross volume	m3	2,43
Total Display area	m ²	2,24
Cabinet Temperature	°C	+65°C to +75°C
Rating Power	watt	3000

FEATURES

- Each shelf heated
- Fan assisted for even heat distribution
- Adjustable shelves
- Each shelf on own thermostat and can be separately adjusted

FREEZERS

FEATURES:

- Optional baskets
- Branding
- Bumper rails
- Riser shelves
- Glass sliding lids
- Fixed wheels



VT250H - VISITOP FREEZER



FEATURES	
Running Temperature	-15°C/-22°C
Ambient Conditions	28°C - 65% RH
Gross cabinet volume	1109 Litres
Refrigerated volume	985 Litres
Insulation	Polyurethane
Thermostat	Electronic Controller
Frame Antimist Heater	Yes
Expansion Device	Capillary Tube
Evaporator Fans	Static Skin
Voltage	220-240vac/50hZ
Refrigerant	R290
Condenser	Fan assist
Compressor	LBP Hermetic
Feet	1 Direction Wheel
Glass Door Type & Quantity	4 x Sliding
Footprint area	2.58 m ²
Glass Display Visual Area	2.1 m ²
Nominal Rating Power	450 (Watts) /1.95 (A)

OPTIONAL EXTRAS

- 8 x BASKETS
- BRANDING

DIMENSIONS	UoM	8FT
Length	mm	2505
Width	mm	960
Height	mm	725
Weight	kg	230



VT200H - VISITOP FREEZER



FEATURES	
Running Temperature	-15°C/-22°C
Ambient Conditions	28°C - 65% RH
Gross cabinet volume	767 Litres
Refrigerated volume	693 Litres
Insulation	Polyurethane
Thermostat	Electronic Controller
Frame Antimist Heater	Yes
Expansion Device	Capillary Tube
Evaporator Fans	Static Skin
Voltage	220-240vac/50hZ
Refrigerant	R290
Condenser	Fan assist
Compressor	LBP Hermetic
Feet	1 Direction Wheel
Glass Door Type & Quantity	2 x Sliding
Footprint area	2.08 m²
Glass Display Visual Area	1.66 m²
Nominal Rating Power	450 (Watts) /1.94 (A)

OPTIONAL EXTRAS

- 6 x BASKETS
- BRANDING

DIMENSIONS	UoM	6FT
Length	mm	2040
Width	mm	960
Height	mm	725
Weight	kg	180



VT525ST - VISITOP FREEZER



DIMENSIONS	UoM	4FT
Length	mm	1455
Width	mm	655
Height	mm	875
Weight	kg	120
Running Temperature		-18°C/-20°C
Ambient Conditions		27°C - 65% RH Class 4
Quantity and baskets size		3 off 405 x 470 x 230
Management Device / Thermostat		Electronic Controller
Defrost method		Cycled-Natural
Expansion Device		Capillary Tube
Evaporator		Ice lined
Voltage		220-240vac/50hZ
Refrigerant		R600a
Condenser		Fan assist
Compressor		LBP Hermetic
Feet		Rollers
Glass Door Type & Quantity		2 x Sliding
Footprint area	m ²	0,94
Glass Display Visual Area	m ²	0,7
Nominal Rating Power		450 (Watts) /1.1 (A)

FEATURES

Supplied standard with 3 baskets
Glass sliding top
Suitable for ice-cream

OPTIONAL EXTRAS - BRANDING



CVT2500 - CURVED GLASS FREEZER



FEATURES	
Running Temperature	-15°C/-23°C
Ambient Conditions	28°C - 65% RH
Refrigeration volume	780 Litres
Insulation	Polyurethane
Baskets	6 (adjustable)
Lighting	1 x LED
Thermostat	Electronic Controller
Frame Antimist Heater	Yes
Expansion Device	Capillary Tube
Evaporator Fans	Static Skin
Voltage	220-240vac/50hZ
Defrost Method	Hot Gas
Refrigerant	R404a
Condenser	Fan assist
Compressor	LBP Hermetic
Feet	Screw Foot
Glass Door Type & Quantity	2 x Curve Sliding
Footprint area	2.18 m ²
Glass Display Visual Area	2.2 m ²
Nominal Rating Power	650 (Watts) / 2.83 (A)

OPTIONAL EXTRAS

- RISER SHELVES

DIMENSIONS	UoM	8FT
Length	mm	2500
Width	mm	870
Height	mm	830
Weight	kg	215



CVT1850 (Head/End Piece) - CURVED GLASS FREEZER



FEATURES	
Running Temperature	-15°C/-23°C
Ambient Conditions	28°C - 65% RH
Refrigeration volume	530 Litres
Insulation	Polyurethane
Baskets	4 (adjustable)
Lighting	1 x LED
Thermostat	Electronic Controller
Frame Antimist Heater	Yes
Expansion Device	Capillary Tube
Evaporator Fans	Static Skin
Voltage	220-240vac/50hZ
Defrost Method	Hot Gas
Refrigerant	R404a
Condenser	Fan assist
Compressor	LBP Hermetic
Feet	Screw Foot
Glass Door Type & Quantity	2 x Curve Sliding
Footprint area	1.61 m ²
Glass Display Visual Area	1.4 m ²
Nominal Rating Power	550 (Watts) / 2.39 (A)

DIMENSIONS	UoM	6FT
Length	mm	1850
Width	mm	870
Height	mm	830
Weight	kg	170

UNDERBARS

FEATURES:

- 430 satin finish steel exterior
- 304 stainless steel interior base
- Galvanised rear and bottom
- R290 refrigerant
- Digital temperature display
- Adjustable heavy duty plastic coated shelves
- Dual thermopane safety glass
- Lockable
- Splash back
- Self-closing doors
- Robust handles
- Adjustable thermostats
- Brake castors





**BUILT
AFRICA
TUFF**

NEW 2 YEAR WARRANTY ON ALL OUR UNDERBAR UNITS

- > Just underbars have been robustly manufactured for the past 25 years to be able to withstand the harsh and rigorous operating environments of Africa.
- > All 2021 underbars now run on R290 gas for greener more efficient operation. R290 refrigerant allows for a reduced charge when compared to conventional R134a refrigeration and a lower system energy use. This is not only better for the environment but also reduces operating costs.
- > We have also changed the condenser coil to a parallel pass system which is easier to keep clean and reduces the harmful effects of blocked coils
- > Evaporator coils are corrosion dipped to increase lifespan and protect against exposure to aggressive products like vinegar etc.
- > We are so confident in the build quality and longevity of our units that we are now offering a 2 year factory warranty on all our underbars.
- > So if you are looking for a quality underbar at affordable prices that lasts, then choose the unit that is “Built Africa Tuff” and accompanied by a 2 year warranty for additional peace of mind.

Evaporator Coils are
corrosion dipped for
maximum longevity

Parallel Pass
system on
Condensor Coil

R290 gas
for greener
more efficient
operation



UNDERBAR FRIDGE

SWING DOOR GLASS DOOR

FEATURES

- Stainless Steel grade 430 satin finish no 4 for sides, top and front grid
- Galvanized Steel – Rear and Bottom
- Polyurethane foam injection insulation
- Robust top and bottom hinges
- Fully adjustable heavy duty plastic coated shelves
- Digital temperature display with high/low voltage protection
- Self-closing doors
- Robust handles on doors
- All underbars supplied with brake castors
- Dual thermopane safety glass used for glass doors
- Adjustable thermostat 2°C – 6°C
- Auto Evaporation (The condensation is evaporated, hence no need to drain)
- All models are 220V – Plug in and switch on

TEMPERATURE RANGE: 2° TO 6°C



	GD4SCH	GD6SCH	GD8SCH
Doors	1.5	2.5	3.5
Height (with castors)	900mm	900mm	900mm
Width	1180mm	1780mm	2380mm
Depth	650mm/750mm	650mm/750mm	650mm/750mm
Temperature Range	2° to 6°C	2° to 6°C	2° to 6°C
Refrigerant	R290	R290	R290
Internal Volume (Litres)	319	580	840

SWING DOOR STAINLESS STEEL DOOR

FEATURES

- Stainless Steel grade 430 satin finish no 4 for sides, top and front grid
- Galvanized Steel – Rear and Bottom
- Polyurethane foam injection insulation
- Robust top and bottom hinges
- Fully adjustable heavy duty plastic coated shelves
- Digital temperature display with high/low voltage protection
- Self-closing doors
- Robust handles on doors
- All underbars supplied with brake castors
- Adjustable thermostat 2°C – 6°C
- Auto Evaporation (The condensation is evaporated, hence no need to drain)
- All models are 220V – Plug in and switch on

TEMPERATURE RANGE: 2° TO 6°C



	QUB4S/CH	QUB6S/CH	QUB8S/CH
Doors	1.5	2.5	3.5
Height (with castors)	900mm	900mm	900mm
Width	1180mm	1780mm	2380mm
Depth	650mm/750mm	650mm/750mm	650mm/750mm
Temperature Range	2° to 6°C	2° to 6°C	2° to 6°C
Refrigerant	R290	R290	R290
Internal Volume (Litres)	319	580	840



UNDERBAR FRIDGE

GASTRANORM GLASS DOOR

FEATURES

- Stainless Steel grade 430 satin finish no 4 for sides, top and front grid
- Galvanized Steel – Rear and Bottom
- Polyurethane foam injection insulation
- Robust top and bottom hinges
- Fully adjustable heavy duty plastic coated shelves
- Digital temperature display with high/low voltage protection
- Self-closing doors
- Robust handles on doors
- All underbars supplied with brake castors
- Dual thermopane safety glass used for glass doors
- Adjustable thermostat 2°C – 6°C
- Auto Evaporation (The condensation is evaporated, hence no need to drain)
- All models are 220V – Plug in and switch on

TEMPERATURE RANGE: 2° TO 6°C



	GD2GH	GD3GH	GD4GH
Doors	2.5	3.5	4.5
Height (with castors)	900mm	900mm	900mm
Width	1335mm	1780mm	2380mm
Depth	650mm/750mm	650mm/750mm	650mm/750mm
Temperature Range	2° to 6°C	2° to 6°C	2° to 6°C
Refrigerant	R290	R290	R290
Internal Volume (Litres)	310	500	700

GASTRANORM STAINLESS STEEL DOOR

FEATURES

- Stainless Steel grade 430 satin finish no 4 for sides, top and front grid
- Galvanized Steel – Rear and Bottom
- Polyurethane foam injection insulation
- Robust top and bottom hinges
- Fully adjustable heavy duty plastic coated shelves
- Digital temperature display with high/low voltage protection
- Self-closing doors
- Robust handles on doors
- All underbars supplied with brake castors
- Adjustable thermostat 2°C – 6°C
- Auto Evaporation (The condensation is evaporated, hence no need to drain)
- All models are 220V – Plug in and switch on

TEMPERATURE RANGE: 2° TO 6°C



	QUB2GH	QUB3GH	QUB4GH
Doors	2.5	3.5	4.5
Height (with castors)	900mm	900mm	900mm
Width	1335mm	1780mm	2380mm
Depth	650mm/750mm	650mm/750mm	650mm/750mm
Temperature Range	2° to 6°C	2° to 6°C	2° to 6°C
Refrigerant	R290	R290	R290
Internal Volume (Litres)	310	500	700



UNDERBAR FRIDGE

GASTRANORM GLASS DOOR PIZZA TOP

FEATURES

- Supplied now with half door above compressor
- Stainless Steel grade 430 satin finish no 4 for sides, top and front grid
- Galvanized Steel – Rear and Bottom
- Polyurethane foam injection insulation
- Robust top and bottom hinges
- Fully adjustable heavy duty plastic coated shelves
- Digital temperature display with high/low voltage protection
- Self-closing doors
- Robust handles on doors
- All underbars supplied with brake castors
- Dual thermopane safety glass used for glass doors
- Adjustable thermostat 2°C – 6°C
- Auto Evaporation (The condensation is evaporated, hence no need to drain)
- All models are 220V – Plug in and switch on

TEMPERATURE RANGE: 2° TO 6°C



	GD2GPZT	GD3GPZT	GD4GPZT
Doors	2.5	3.5	4.5
Height (with castors)	900mm	900mm	900mm
Width	1335mm	1780mm	2380mm
Depth	650mm/750mm	650mm/750mm	650mm/750mm
Temperature Range	2° to 6°C	2° to 6°C	2° to 6°C
Refrigerant	R134A	R134A	R134A
Internal Volume (Litres)	310	500	700

PIZZA TOP GLASS DOOR

FEATURES

- Stainless Steel grade 430 satin finish no 4 for sides, top and front grid
- Galvanized Steel – Rear and Bottom
- Polyurethane foam injection insulation
- Robust top and bottom hinges
- Fully adjustable heavy duty plastic coated shelves
- Digital temperature display with high/low voltage protection
- Self-closing doors
- Robust handles on doors
- All underbars supplied with brake castors
- Dual thermopane safety glass used for glass doors
- Adjustable thermostat 2°C – 6°C
- Auto Evaporation (The condensation is evaporated, hence no need to drain)
- All models are 220V – Plug in and switch on

TEMPERATURE RANGE: 2° TO 6°C



	GD4PZTH	GD6PZTH	GD8PZT
Doors	1.5	2.5	3.5
Height (with castors)	900mm	900mm	900mm
Width	1180mm	1780mm	2380mm
Depth	650mm/750mm	650mm/750mm	650mm/750mm
Temperature Range	2° to 6°C	2° to 6°C	2° to 6°C
Refrigerant	R290	R290	R134A
Internal Volume (Litres)	319	580	750



UNDERBAR FRIDGE

PIZZA TOP STEEL DOOR

FEATURES

- Stainless Steel grade 430 satin finish no 4 for sides, top and front grid
- Galvanized Steel – Rear and Bottom
- Polyurethane foam injection insulation
- Robust top and bottom hinges
- Fully adjustable heavy duty plastic coated shelves
- Digital temperature display with high/low voltage protection
- Self-closing doors
- Robust handles on doors
- All underbars supplied with brake castors
- Dual thermopane safety glass used for glass doors
- Adjustable thermostat 2°C – 6°C
- Auto Evaporation (The condensation is evaporated, hence no need to drain)
- All models are 220V – Plug in and switch on

TEMPERATURE RANGE: 2° TO 6°C



	QUB4PZTH	QUB6PZTH	QUB8PZT
Doors	1.5	2.5	3.5
Height (with castors)	900mm	900mm	900mm
Width	1180mm	1780mm	2380mm
Depth	650mm/750mm	650mm/750mm	650mm/750mm
Temperature Range	2° to 6°C	2° to 6°C	2° to 6°C
Refrigerant	R290	R290	R134A
Internal Volume (Litres)	319	580	750

POLAR TOP

FEATURES

- Stainless Steel grade 430 satin finish no 4 for sides, top and front grid
- Galvanized Steel – Rear and Bottom
- Polyurethane foam injection insulation
- Robust top and bottom hinges
- Fully adjustable heavy duty plastic coated shelves
- Digital temperature display with high/low voltage protection
- Self-closing doors
- Robust handles on doors
- All underbars supplied with brake castors
- Adjustable thermostat 2°C – 6°C
- Auto Evaporation (The condensation is evaporated, hence no need to drain)
- All models are 220V – Plug in and switch on

TEMPERATURE RANGE: 2° TO 6°C



	QUB4PLTH	QUB6PLTH	QUB8PLTH
Doors	1.5	2.5	3.5
Height (with castors)	900mm	900mm	900mm
Width	1180mm	1780mm	2380mm
Depth	650mm/750mm	650mm/750mm	650mm/750mm
Weight	110Kgs	170Kgs	190Kgs
Temperature Range	2° to 6°C	2° to 6°C	2° to 6°C
Refrigerant	R290	R290	R290
Internal Volume (Litres)	200	450	700

UNDERBAR FRIDGE / FREEZER

UNDERBAR REMOTE

FEATURES

- Stainless Steel grade 430 satin finish no.4 (sides, top and front)
- Galvanized Steel – Rear and Bottom
- Polyurethane foam injection insulation
- Robust top and bottom hinges
- Fully adjustable heavy duty plastic coated shelves
- Self-closing doors
- Robust handles on doors
- Refrigeration pack supplied with cabinet but requires installation



	QUB4R	QUB6R	QUB8R
Height	900mm	900mm	900mm
Width	1180mm	1780mm	2380mm
Depth	750mm	750mm	750mm

TEMPERATURE RANGE: 3° TO 5°C

UNDERBAR FREEZER STAINLESS STEEL DOOR

FEATURES

- Stainless Steel grade 430 satin finish no 4 for sides, top and front grid
- Galvanized Steel – Rear and Bottom
- Polyurethane foam injection insulation
- Robust top and bottom hinges
- Fully adjustable heavy duty plastic coated shelves
- Digital temperature display with high/low voltage protection
- Self-closing doors
- Robust handles on doors
- All underbars supplied with brake castors
- Dual thermopane safety glass used for glass doors
- Adjustable thermostat -14°C
- Auto Evaporation (The condensation is evaporated, hence no need to drain)
- All models are 220V – Plug in and switch on



FEATURES

- Doors: 2
- Height (with castors): 900mm
- Width: 1780mm
- Depth: 650mm/750mm
- Temperature Range: – 14°C
- Refrigerant: R404
- Internal Volume: 450L

TEMPERATURE RANGE: -14°C

