

TAKE-AWAYS



BAKERY



BUTCHERY



RESTAURANTS



INSTITUTIONS



OTEL

HOTELS

www.afcat.com.na

STAINLESS STEEL SURFACES CATALOGUE

Scientific Engineering is a South African-based manufacturer founded in 1966.

Our specialized hospitality brand is our latest addition, developed and supported by our strong manufacturing capabilities, with extensive experience in the laboratory, food service and butchery equipment sectors. Through continuous innovative strategies, the business has become more solution-orientated for local and international projects. Scientific Engineering continually strives to develop manufacturing techniques and products that conform to the highest quality standards, with a strong focus on durability, workmanship, functionality and, most importantly, longevity so that customers receive value for money. We have developed a strong footprint within the African continent and are proud to have partners in over 30 countries worldwide to which we export.

Through the long-term development of staff, Scientific Engineering's strength lies in its human resources. Its dedicated, loyal, and stable workforce of over 200 staff has played a significant role in the business's success.

Reasons why you should choose us:

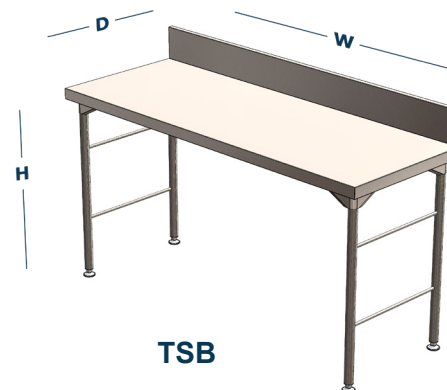
- Scientific Engineering is an ISO9001:2015 certified company that designs, manufactures, and sells gas, electrical, and specialized hospitality products.
- We place strong emphasis on the quality of our products.
- Our offering to all our customers is supported by a strong engineering team and an R&D division to extend our value proposition.
- Our products have become a product of choice among discerning customers locally and internationally.
- We are proudly South African.





TABLE OF CONTENTS

PAGE	1 - 2	About us
	3.	Contents
	4 - 5	Work Tables Stainless steel
	6.	Bakery KnockOut Table
	6.	Butchery Sausage table
	7.	Work Table Additions.
	8 -10	Stainless Steel Sinks
	11-12	Scullery, Dishwasher Sinks and Tables
	13	Bain Marie
	14	Sevice Counters
	15	Riser Shelves
	16	Bain Marie and Service Counter Additions
	17	Bar Jockey Stations
	18	Wall shelving
	19	Trolleys
	20	Dunnage Stand
	21-22	Shelving Systems Standard Duty
	23-24	Shelving Systems Heavy Duty



Specification:

Work Top: Grade 430 Stainless Steel.

Under Sheet: 1.2mm Galvanised Reinforced.

Legs: Grade 304 Round Legs On Heavy Duty Height Adjustable Plastic Feet.

Features:

- Height Adjustable Removable Legs - 8 x M10 Bolts Per Side.
- All Tables Include Vermin Proof Sound Deadener.
- 2 Tier Under Shelf Cross Supports as standard.

Code	Description	Dimensions W x D x H
TSB900-0.9	Work Table Splashback 900mm.	900mm x 650mm x 900mm
TSB1050-0.9	Work Table Splashback 1050mm.	1050mm x 650mm x 900mm
TSB1350-0.9	Work Table Splashback 1350mm.	1350mm x 650mm x 900mm
TSB1650-0.9	Work Table Splashback 1650mm.	1650mm x 650mm x 900mm
TSB1840-0.9	Work Table Splashback 1840mm.	1840mm x 650mm x 900mm
TSB2250-0.9	Work Table Splashback 2250mm.	2250mm x 650mm x 900mm

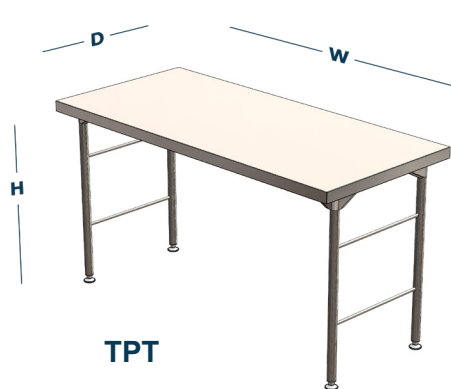
TPT900-0.9	Work Table Plain Top 900mm.	900mm x 750mm x 900mm
TPT1050-0.9	Work Table Plain Top 1050mm.	1050mm x 750mm x 900mm
TPT1350-0.9	Work Table Plain Top 1350mm.	1350mm x 750mm x 900mm
TPT1650-0.9	Work Table Plain Top 1650mm.	1650mm x 750mm x 900mm
TPT1840-0.9	Work Table Plain Top 1840mm.	1840mm x 750mm x 900mm
TPT2250-0.9	Work Table Plain Top 2250mm.	2250mm x 750mm x 900mm

TSB900- 0.7	Work Table Splashback 900mm.	900mm x 650mm x 900mm
TSB1050-0.7	Work Table Splashback 1050mm.	1050mm x 650mm x 900mm
TSB1350-0.7	Work Table Splashback 1350mm.	1350mm x 650mm x 900mm
TSB1650-0.7	Work Table Splashback 1650mm.	1650mm x 650mm x 900mm
TSB1840-0.7	Work Table Splashback 1840mm.	1840mm x 650mm x 900mm
TSB2250-0.7	Work Table Splashback 2250mm.	2250mm x 650mm x 900mm



Specification:**Work Top:** Grade 430 Stainless Steel.**Under Sheet:** 1.2mm Galvanised Reinforced.**Legs:** Grade 304 Round Legs On Heavy Duty Height Adjustable Plastic Feet.**Features:**

- Height Adjustable Removable Legs - 8 x M10 Bolts Per Side.
- All Tables Include Vermin Proof Sound Deadener.
- 2 Tier Under Shelf Cross Supports as standard.



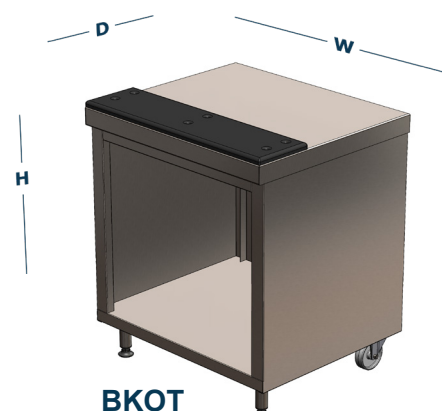
Code	Description	Dimensions W x D x H
TPT900-0.7	Work Table Plain Top 900mm.	900mm x 750mm x 900mm
TPT1050-0.7	Work Table Plain Top 1050mm.	1050mm x 750mm x 900mm
TPT1350-0.7	Work Table Plain Top 1350mm.	1350mm x 750mm x 900mm
TPT1650-0.7	Work Table Plain Top 1650mm.	1650mm x 750mm x 900mm
TPT1840-0.7	Work Table Plain Top 1840mm.	1840mm x 750mm x 900mm
TPT2250-0.7	Work Table Plain Top 2250mm.	2250mm x 750mm x 900mm

USG900	Galvanised Under Shelf 1.2mm.	900mm
USG1050	Galvanised Under Shelf 1.2mm.	1050mm
USG1350	Galvanised Under Shelf 1.2mm.	1350mm
USG1650	Galvanised Under Shelf 1.2mm.	1650mm
USG1840	Galvanised Under Shelf 1.2mm.	1840mm
USG2250	Galvanised Under Shelf 1.2mm.	2250mm

USS900	Stainless Steel Under Shelf 1.2mm.	900mm
USS1050	Stainless Steel Under Shelf 1.2mm.	1050mm
USS1350	Stainless Steel Under Shelf 1.2mm.	1350mm
USS1650	Stainless Steel Under Shelf 1.2mm.	1650mm
USS1840	Stainless Steel Under Shelf 1.2mm.	1840mm
USS2250	Stainless Steel Under Shelf 1.2mm.	2250mm

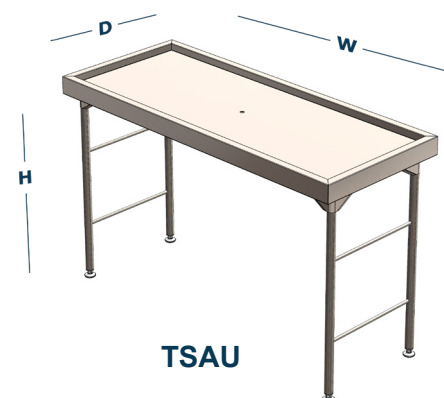
Specification:**Work Top:** 2mm grade 430 Stainless Steel.**Under Sheet:** 1.2mm Galvanised Reinforced.**Body:** Enclosed Sides And Rear With Storage Base Below.**Features:**

- 20mm Heavy Duty Rubber Bash Plate 200mm Deep To Front. 100mm Inline Nylon Castors To Rear Only.



Code	Description	Dimensions W x D x H
BKOTS	Full Stainless Steel Base And Cabinet.	750mm x 650mm x 850mm
BKOTG	Galvanised Base And Cabinet.	750mm x 650mm x 850mm

BUTCHERY SAUSAGE TABLE

**Specification:****Work Top:** Grade 430 Stainless Steel.**Under Sheet:** 1.2mm Galvanised Reinforced.**Legs:** Grade 304 Round Legs On Heavy duty height Adjustable Plastic Feet.**Features:**

- Recess All Sides With 3/4" Drain Valve Fitted Below.
- Height Adjustable Removable Legs - 8 x M10 Bolts Per Side.
- All Tables Include Vermin Proof Sound Deadener.

Code	Description	Dimensions W x D x H
TSAU1100	Butchery Sausage Table	1100mm x 700mm x 900mm
TSAU1700	Butchery Sausage Table	1700mm x 700mm x 900mm
TSAU2250	Butchery Sausage Table	2250mm x 700mm x 900mm

Specification:

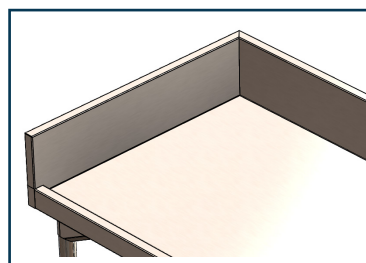
Work Top: Grade 430 Stainless Steel.

Under Sheet: 1.2mm Galvanised Reinforced.

Legs: Grade 304 Round Legs On Heavy Duty Height Adjustable Plastic Feet.

Features:

- Height Adjustable Removable Legs - 8 x M10 Bolts Per Side.
- All Tables Include Vermin Proof Sound Deadener.
- 2 Tier Under Shelf Cross Supports as standard.



SBPS



AJACK

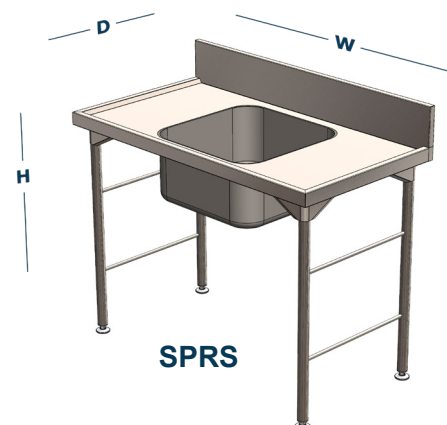


CASTORS



PSB450

Code	Description	Dimensions W x D x H
SBPS	150mm Splash Back Per Side.	650mm/750mm
AJACK	Aluminium Feet Per Set of 4.	
CASTORS	Rubber Castor Swivel Set of 4 With 2 Lockable.	75mm
PSB450	Tapered Prep Sink Bowl.	450mm



SPRS

Specification:

Prep Bowl - 500mm x 500mm x 250mm
1.2mm Grade 304 Integrally Pressed 60Lt Bowl - Italian.

Pot Bowl - 600mm x 500mm x 300mm
1.2mm Grade 304 Integrally Pressed 90Lt Bowl - Italian.

Work Top: Grade 430 Stainless Steel
0.9mm.

Legs: Grade 304 Round Legs On Heavy Duty Height Adjustable Plastic Feet.

Features:

- Height Adjustable Removable Legs - 8 x M10 Bolts Per Side.
- All Sinks Include 150mm Splash Back Rear.
- All Tables Include Vermin Proof Sound Deadener Where Applicable.

Code	Description	Dimensions W x D x H
SPRS760	Single Bowl Prep 760mm.	760mm x 650mm x 900mm
SPRS900	Single Bowl Prep 900mm.	900mm x 650mm x 900mm
SPRS1200	Single Bowl Prep 1200mm.	1200mm x 650mm x 900mm
SPRS1650	Single Bowl Prep 1650mm.	1650mm x 650mm x 900mm
SPRD1350	Double Bowl Prep 1350mm.	1350mm x 650mm x 900mm
SPRD1650	Double Bowl Prep 1650mm.	1650mm x 650mm x 900mm
SPRD1850	Double Bowl Prep 1850mm.	1850mm x 650mm x 900mm
SPRD2250	Double Bowl Prep 2250mm..	2250mm x 650mm x 900mm
SPTS760	Single Bowl Pot 760mm.	760mm x 650mm x 900mm
SPTS900	Single Bowl Pot 900mm.	900mm x 650mm x 900mm
SPTD1650	Double Bowl Pot 1650mm.	1650mm x 650mm x 900mm
SPTD1850	Double Bowl Pot 1850mm.	1850mm x 650mm x 900mm
SPTD2250	Double Bowl pot 2250mm.	2250mm x 650mm x 900mm

Specification:

Prep Bowl - 500mm x 500mm x 250mm
1.2mm Grade 304 Integrally Pressed 60Lt Bowl - Italian.

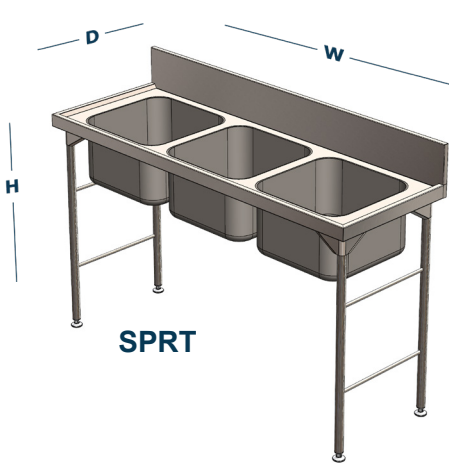
Pot Bowl - 600mm x 500mm x 300mm
1.2mm Grade 304 Integrally Pressed 90Lt Bowl - Italian.

Work Top: Grade 430 Stainless Steel
0.9mm.

Legs: Grade 304 Round Legs On Heavy
Duty Height Adjustable Plastic Feet.

Features:

- Height Adjustable Removable Legs - 8 x M10 Bolts Per Side.
- All Sinks Include 150mm Splash Back Rear.
- All Tables Include Vermin Proof Sound Deadener Where Applicable.



SPRT

Code	Description	Dimensions W x D x H
SPRT1850	Triple Bowl Prep 1850mm.	1850mm x 650mm x 900mm
SPRT2250	Triple Bowl Prep 2250mm.	2250mm x 650mm x 900mm
SPRTT2250	Triple Bowl Pot 2250mm.	2250mm x 650mm x 900mm

SVP1350	Combination Veg Prep 1350mm.	1350mm x 650mm x 900mm
SVP1650	Combination Veg Prep 1650mm.	1650mm x 650mm x 900mm
SVP1850	Combination Veg Prep 1850mm.	1850mm x 650mm x 900mm
SVP2250	Combination Veg Prep 2250mm.	2250mm x 650mm x 900mm

UST760	Stainless Steel Tubular Under Shelf.	760mm
UST900	Stainless Steel Tubular Under Shelf.	900mm
UST1050	Stainless Steel Tubular Under Shelf.	1050mm
UST1200	Stainless Steel Tubular Under Shelf.	1200mm
UST1350	Stainless Steel Tubular Under Shelf.	1350mm
UST1650	Stainless Steel Tubular Under Shelf.	1650mm
UST1850	Stainless Steel Tubular Under Shelf.	1850mm
UST2250	Stainless Steel Tubular Under Shelf.	2250mm

HWB	Hand Wash Basin Incl Skirt and Brackets.	520mm x 420mm x 300mm
HWBKA	Knee Activated Hand Wash Basin - EURO.	400mm x 300mm x 200mm



SPTS



SPRTT



Specification:

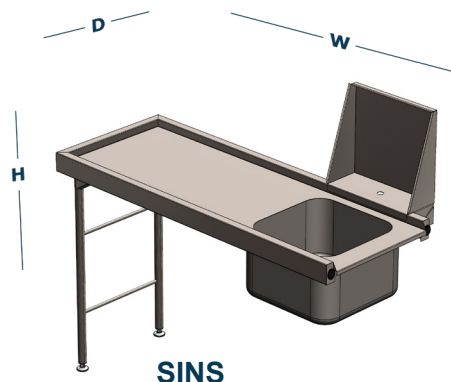
Inlet Sink Bowl - 450mm x 450mm x 250mm 1.2mm Grade 304 Integrally Pressed 50Lt Bowl - Italian.

Work Top: Grade 430 Stainless Steel 0.9mm.

Legs: Grade 304 Round Legs On Heavy Duty Height Adjustable Plastic Feet.

Features:

- Inlet Sinks Include Fully Reversible Integrated High Splash Back.
- Height Adjustable Removeable Legs - 8 x M10 Bolts Per Side.
- All Tables And Sinks Include Vermin Proof Sound Deadener Where Applicable.



Code	Description	Dimensions W x D x H
SINS900	Inlet Sink Lip On Single.	900mm x 630mm x 900mm
SINS1200	Inlet Sink Lip On Single.	1200mm x 630mm x 900mm
SINS1650	Inlet Sink Lip On Single.	1650mm x 630mm x 900mm
SINS1800	Inlet Sink Lip On Single.	1800mm x 630mm x 900mm
SINS2100	Inlet Sink Lip On Single.	2100mm x 630mm x 900mm
DBSS500	Under Counter 3 Basket Storage.	590mm x 500mm x 800mm
DBSD1000	Under Counter 6 Basket Storage.	1150mm x 500mm x 800mm
WDBS	Wall Dishwasher Basket Shelf.	Per Meter
TOUT900	Outlet Table Lip On.	900mm x 630mm x 900mm
TOUT1200	Outlet Table Lip On.	1200mm x 630mm x 900mm
TOUT1650	Outlet Table Lip On.	1650mm x 630mm x 900mm
TOUT1800	Outlet Table Lip On.	1800mm x 630mm x 900mm
TOUT2100	Outlet Table Lip On.	2100mm x 630mm x 900mm
TDR900	Table Dirties Receiving.	900mm x 630mm x 900mm
TDR1100	Table Dirties Receiving.	1100mm x 630mm x 900mm
TDR1650	Table Dirties Receiving.	1650mm x 630mm x 900mm
TDR2100	Table Dirties Receiving.	2100mm x 630mm x 900mm
RBUNG	Dirties Table Rubber Bung.	

Specification:

Prep Bowl - 500mm x 500mm x 250mm 1.2mm Grade 304 Integrally Pressed 60Lt Bowl - Italian.

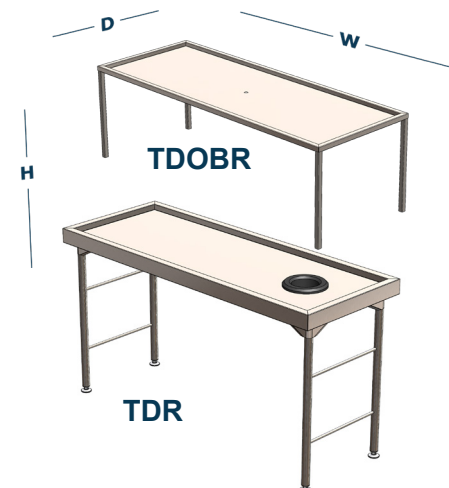
Pot Bowl - 600mm x 500mm x 300mm 1.2mm Grade 304 Integrally Pressed 90Lt Bowl - Italian.

Work Top: Grade 430 Stainless Steel 0.9mm.

Legs: Grade 304 Round Legs On Heavy Duty Height Adjustable Plastic Feet.

Features:

- Height Adjustable Removeable Legs - 8 x M10 Bolts Per Side.
- All Sinks Include 150mm Splash Back Rear.
- All Tables Include Vermin Proof Sound Deadener Where Applicable.

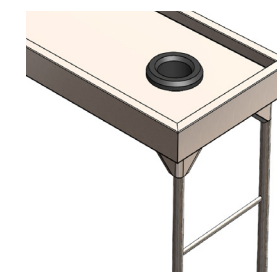
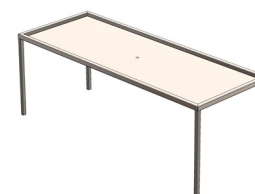


Code	Description	Dimensions W x D x H
TDOBR900	Dirties Table Overhead Basket Shelf.	900mm
TDOBR1100	Dirties Table Overhead Basket Shelf.	1100mm
TDOBR1650	Dirties Table Overhead Basket Shelf.	1650mm
TDOBR2100	Dirties Table Overhead Basket Shelf.	2100mm
PRW450S	Pot Rack Wall Type Single 450mm.	Per Meter
PRW450D	Pot Rack Wall Type Double 450mm x 400mm High.	Per Meter
PRT3T	Pot Rack Tubular 3 Tier.	1200mm x 600mm x 1500mm
PRT4T	Pot Rack Tubular 4 Tier.	1200mm x 600mm x 1500mm

TDOBR

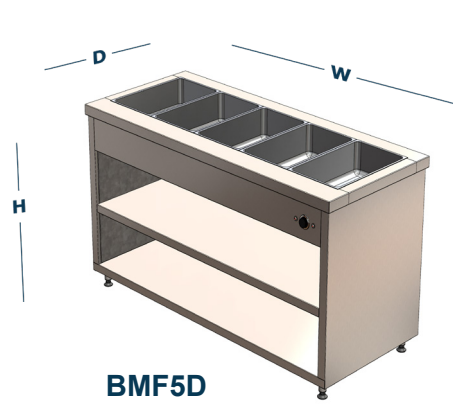
PRW450S

RBUNG



Specification:**Water Well:** Grade 430 Stainless Steel 1.2mm.**Work Top:** Grade 430 Stainless Steel 1.2mm.**Cabinet Body:** Grade 430 Stainless Steel 0.9mm. Sliding Doors: Grade 430 Stainless Steel 1.2mm.**Cabinet Shelf:** Grade 430 Stainless Steel 1.2mm.**Under Sheet:** Grade 430 Stainless Steel 1.2mm.**Legs:** Grade 304 Round Legs On Heavy Duty Height Adjustable Plastic Feet.**Features:**

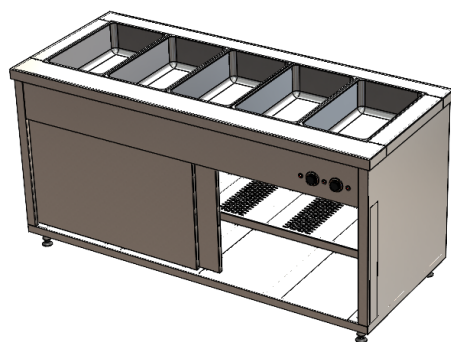
- Full Stainless Steel
- 2 Tier Shelving Below
- Drainage 3/4" ball Valve



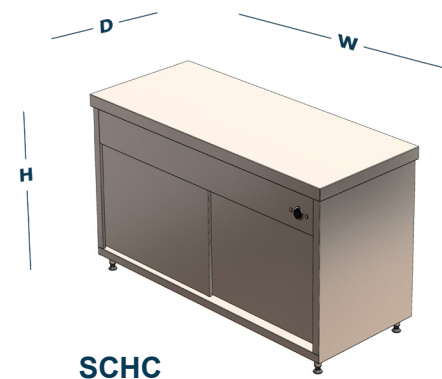
Code	Description	Dimensions W x D x H
------	-------------	----------------------

BMF3D	Bain Marie Floor Model 3 Division - 2.5kW 220v	1100mm x 750mm x 900mm
BMF4D	Bain Marie Floor Model 4 Division - 3kW 220v	1450mm x 750mm x 900mm
BMF5D	Bain Marie Floor Model 5 Division - 3kW 220v	1800mm x 750mm x 900mm
BMF6D	Bain Marie Floor Model 6 Division - 6kW 380v	2100mm x 750mm x 900mm

BMHC3D	Bain Marie On Hot Closet 3 Division - 3.5kW 220v	1100mm x 750mm x 900mm
BMHC4D	Bain Marie On Hot Closet 4 Division - 4.5kW 380v	1450mm x 750mm x 900mm
BMHC5D	Bain Marie On Hot Closet 5 Division - 4.5kW 380v	1800mm x 750mm x 900mm
BMHC6D	Bain Marie On Hot Closet 6 Division - 8kW 380v	2100mm x 750mm x 900mm

**Specification:****Work Top:** Grade 430 Stainless Steel 1.2mm.**Cabinet Body:** Grade 430 Stainless Steel 0.9mm. Sliding Doors: Grade 430 Stainless Steel 1.2mm.**Cabinet Shelf:** Grade 430 Stainless Steel 1.2mm.**Under Sheet:** 1.2mm galvanised reinforced.**Legs:** Grade 304 Round Legs On Heavy Duty Height Adjustable Plastic Feet.**Features:**

- Full Stainless Steel
- 2 Tier Shelving Below



Code	Description	Dimensions W x D x H
------	-------------	----------------------

SCA1100	Service Counter Ambient Open Closet Below.	1100mm x 750mm x 900mm
SCA1600	Service Counter Ambient Open Closet Below.	1600mm x 750mm x 900mm
SCA1800	Service Counter Ambient Open Closet Below.	1800mm x 750mm x 900mm
SCA2000	Service Counter Ambient Open Closet Below.	2000mm x 750mm x 900mm
SCA2250	Service Counter Ambient Open Closet Below.	2250mm x 750mm x 900mm

SCD1100	Service Counter Sliding Doors Below.	1100mm x 750mm x 900mm
SCD1600	Service Counter Sliding Doors Below.	1600mm x 750mm x 900mm
SCD1800	Service Counter Sliding Doors Below.	1800mm x 750mm x 900mm
SCD2000	Service Counter Sliding Doors Below.	2000mm x 750mm x 900mm
SCD2250	Service Counter Sliding Doors Below.	2250mm x 750mm x 900mm

SCHC1100	Service Counter Hot Closet Sliding Door Below - 1.5kW	1100mm x 750mm x 900mm
SCHC1600	Service Counter Hot Closet Sliding Door Below - 2kW	1600mm x 750mm x 900mm
SCHC1800	Service Counter Hot Closet Sliding Door Below - 3kW	1800mm x 750mm x 900mm
SCHC2000	Service Counter Hot Closet Sliding Door Below - 3kW	2000mm x 750mm x 900mm
SCHC2250	Service Counter Hot Closet Sliding Door Below - 3kW	2250mm x 750mm x 900mm

Specification:

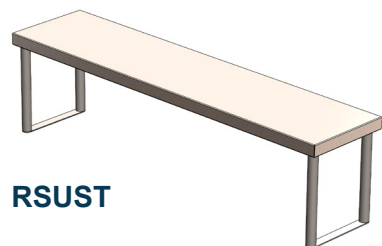
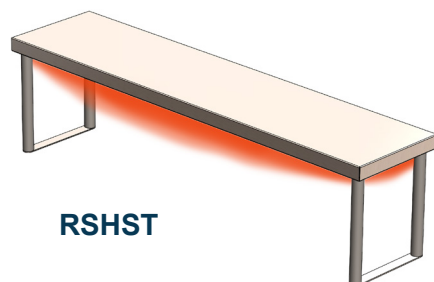
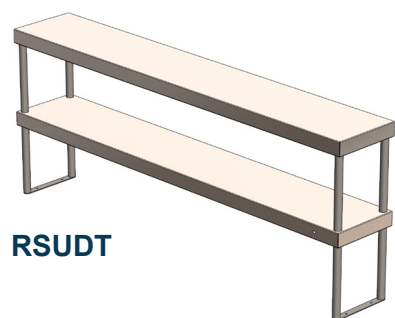
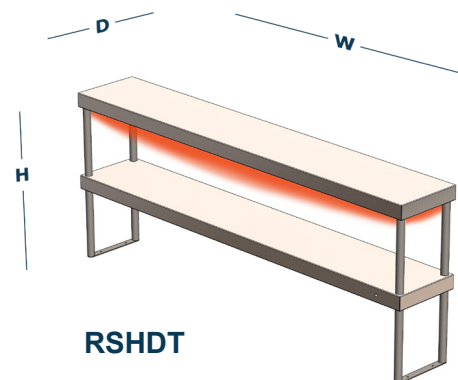
Standard Duty

Shelves: Grade 430 Stainless Steel 0.9mm.

Posts: Grade 430 Stainless Steel 1.2mm.
Height Adjustable Foot Piece Plastic.

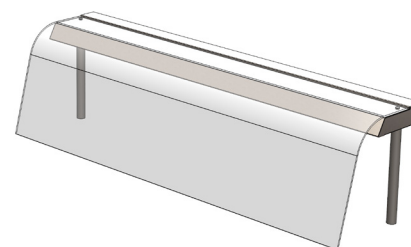
Features:

- Full Stainless Steel
- Bolted Height Adjustable Shelves

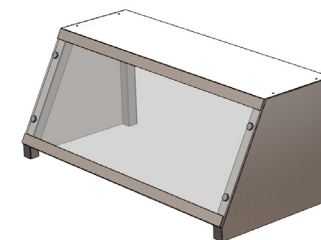


Code	Description	WIDTH
RSUST	Riser Shelf Unheated Single Tier.	Per Meter.
RSUDT	Riser Shelf Unheated Double Tier.	Per Meter.
RSHST	Riser Shelf Heated Single Tier.	Per Meter.
RSHDT	Riser Shelf Double Tier Top Heated.	Per Meter.

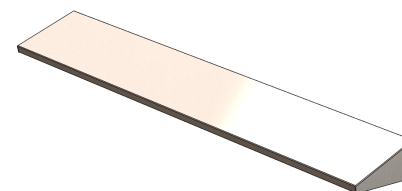
SGFG	Sneeze Guard Flat Glass.	Per Meter.
SGCG	Sneeze Guard Curved Glass.	Per Meter.
CASTORS	Rubber Castor Swivel 2 Lockable.	Per Set of 4.
TSSOL	Tray Slide Solid 350mm Wide.	Per Meter.
TSTUB	Tray Slide Tubular 350mm Wide.	Per Meter.
SDOOR	Sliding Doors.	Per Meter.
HDOOR	Hinged Swing Doors.	600mm.



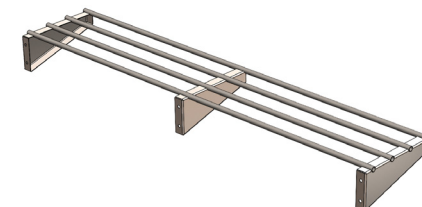
SGFG



SGCG



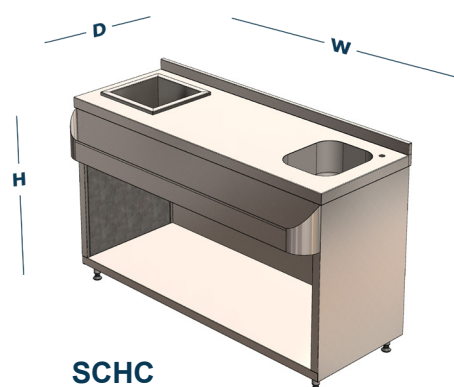
TSSOL



TSTUB

Specification:**Ice Well:** Grade 304 Stainless Steel 1.2mm.**Work Top:** Grade 430 Stainless Steel 1.2mm.**Cabinet Body:** Grade 430 Stainless Steel 0.9mm.**Speed Rail:** Grade 430 Stainless Steel 1.2mm.**Under Sheet:** 1.2mm Galvanised Reinforced.**Legs:** Grade 304 Round Legs On Heavy Duty Height Adjustable Plastic Feet.**Features:**

- Full Stainless Steel
- Speed Rail To Front.
- Polyurethane Insulated Ice Well Grade 304 with 50mm Waste Fitting.
- 50mm Splash Back rear.

**SCHC**

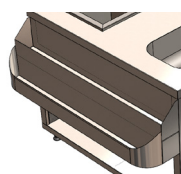
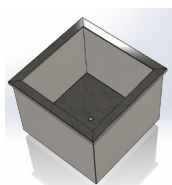
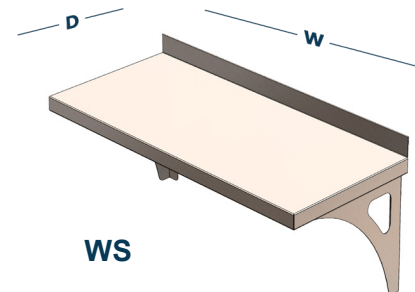
Code	Description	Dimensions W x D x H
------	-------------	----------------------

BJSS1200	Bar Jockey Station Single Speed Rail.	1200mm x 770mm x 900mm
BJSS1500	Bar Jockey Station Single Speed Rail.	1500mm x 770mm x 900mm
BJSS1800	Bar Jockey Station Single Speed Rail.	1800mm x 770mm x 900mm
BJSS2100	Bar Jockey Station Single Speed Rail.	2100mm x 770mm x 900mm

BJSD1200	Bar Jockey Station Double Speed Rail.	1200mm x 770mm x 900mm
BJSD1500	Bar Jockey Station Double Speed Rail.	1500mm x 770mm x 900mm
BJSD1800	Bar Jockey Station Double Speed Rail.	1800mm x 770mm x 900mm
BJSD2100	Bar Jockey Station Double Speed Rail.	2100mm x 770mm x 900mm

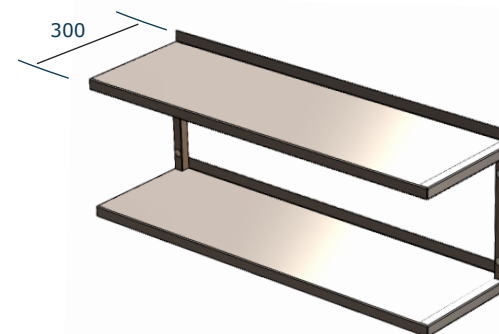
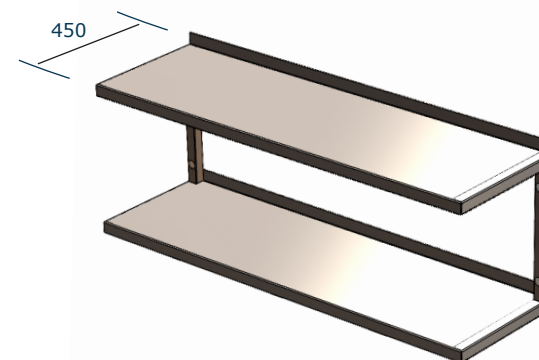
BAR JOCKY STATION ADDITIONS

SRS	Speed Rail Single	Per Meter.
SRD	Speed Rail Double	Per Meter.
IIW400	Insulated Ice Well Polyurethane	400mm x 400mm x 300mm

**SRS****SRD****IIW****WS****Specification:****Shelves:** Grade 430 Stainless Steel 1.2mm.**Brackets:** Grade 430 Stainless Steel 1.5mm.**Frame:** 25mm x 25mm Stainless Steel Tubing.**Features:**

- Full Stainless Steel
- Includes Wall Fixing Brackets With 10mm Holes.

Code	Description	WIDTH
WS300S	Wall Shelf Solid 300mm Deep Single.	Per Meter
WS300D	Wall Shelf Solid 300mm Deep Double.	Per Meter
WS450S	Wall Shelf Solid 450mm Deep Single.	Per Meter
WS450D	Wall Shelf Solid 450mm Deep Double.	Per Meter

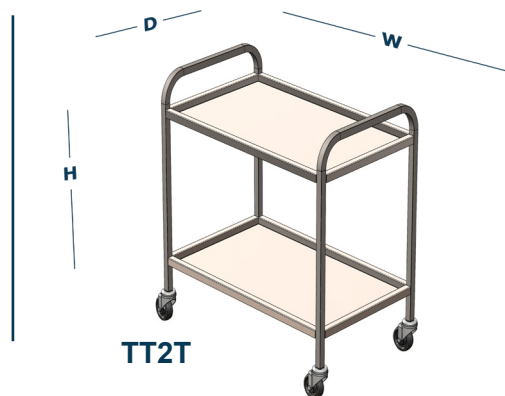
WS300D**WS450D**

Specification:

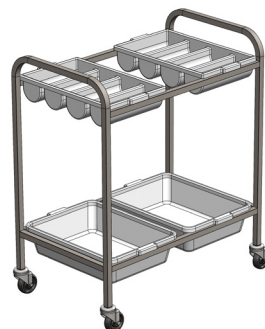
Shelves: Grade 430 Stainless Steel 1.2mm.
Runners: Grade 430 Stainless Steel 1.2mm.
Frame: 25mm x 25mm Stainless Steel Tubing.
Castors: Elasticated Heavy Duty Castors.

Features:

- Full Stainless Steel
- Full Welds To Runners And Shelves.

**TT2T**

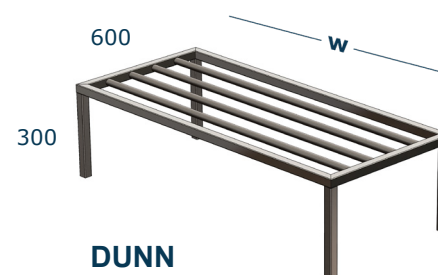
Code	Description	Dimensions W x D x H
TT2T	Tea Trolley Mobile 2 Tier.	900mm x 550mm x 900mm
TT3T	Tea Trolley Mobile 3 Tier.	900mm x 550mm x 900mm
DCT	Dish Clearing Trolley - 2 Tote and Cutlery Trays.	900mm x 550mm x 900mm

TT2T**TT3T****DCT****Specification:**

Frame: 25mm x 25mm Stainless Steel Tubing.

Features:

- Full Stainless Steel grade 304
- Fully Welded.

**DUNN**

Code	Description	WIDTH
DUNN	Dunnage Stand Stainless Steel 600mm Deep.	Per Meter



Specification:**Standard Duty****Shelves:** Grade 430 Stainless Steel 0.9mm.**Posts:** Grade 430 Stainless Steel 1.2mm.
Height Adjustable Foot Piece Plastic.**Features:**

- Full Stainless Steel
- Bolted Height Adjustable Shelves

**STANDARD DUTY**

Code	Description	Dimensions W x D x H
SS4W750	Shelving System 4 Tier.	750mm x 400mm x 1900mm
4W750SS	Spare Shelf Incl. Bolts	750mm x 400mm
SS4W900	Shelving System 4 Tier.	900mm x 400mm x 1900mm
4W900SS	Spare Shelf Incl. Bolts	900mm x 400mm
SS4W1150	Shelving System 4 Tier.	1150mm x 400mm x 1900mm
4W1150SS	Spare Shelf Incl. Bolts	1150mm x 400mm

SS5W750	Shelving System 4 Tier.	750mm x 500mm x 1900mm
5W750SS	Spare Shelf Incl. Bolts	750mm x 500mm
SS5W900	Shelving System 4 Tier.	900mm x 500mm x 1900mm
5W900SS	Spare Shelf Incl. Bolts	900mm x 500mm
SS5W1150	Shelving System 4 Tier.	1150mm x 500mm x 1900mm
5W1150SS	Spare Shelf Incl. Bolts	1150mm x 500mm

Specification:**Standard Duty****Shelves:** 0.9mm Galvanised**Posts:** 1.2mm Galvanised.
Height Adjustable Foot Piece Plastic.**Features:**

- Bolted Height Adjustable Shelves

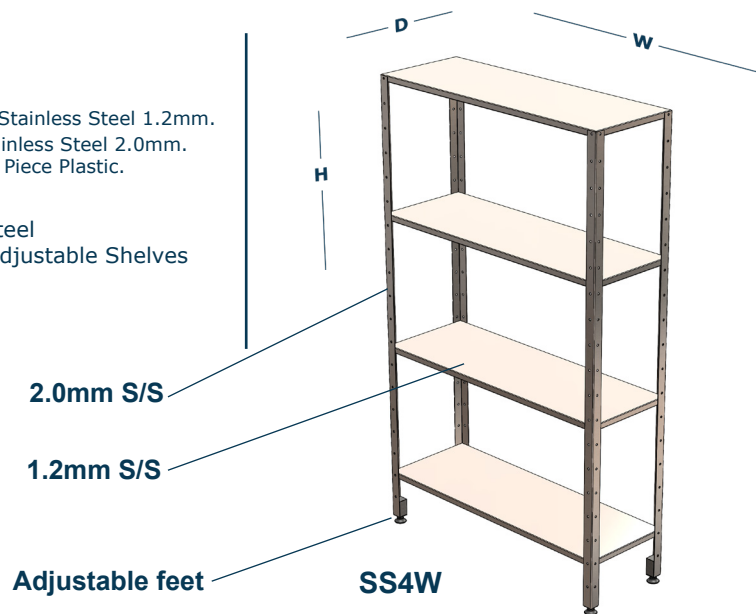
**STANDARD DUTY**

Code	Description	Dimensions W x D x H
GV4W750	Shelving System 4 Tier.	750mm x 400mm x 1900mm
4W750GV	Spare Shelf Incl. Bolts	750mm x 400mm
GV4W900	Shelving System 4 Tier.	900mm x 400mm x 1900mm
4W900GV	Spare Shelf Incl. Bolts	900mm x 400mm
GV4W1150	Shelving System 4 Tier.	1150mm x 400mm x 1900mm
4W1150GV	Spare Shelf Incl. Bolts	1150mm x 400mm

GV5W750	Shelving System 4 Tier.	750mm x 500mm x 1900mm
5W750GV	Spare Shelf Incl. Bolts	750mm x 500mm
GV5W900	Shelving System 4 Tier.	900mm x 500mm x 1900mm
5W900GV	Spare Shelf Incl. Bolts	900mm x 500mm
GV5W1150	Shelving System 4 Tier.	1150mm x 500mm x 1900mm
5W1150GV	Spare Shelf Incl. Bolts	1150mm x 500mm

Specification:**Heavy Duty****Shelves:** Grade 430 Stainless Steel 1.2mm.**Posts:** Grade 430 Stainless Steel 2.0mm.
Height Adjustable Foot Piece Plastic.**Features:**

- Full Stainless Steel
- Bolted Height Adjustable Shelves

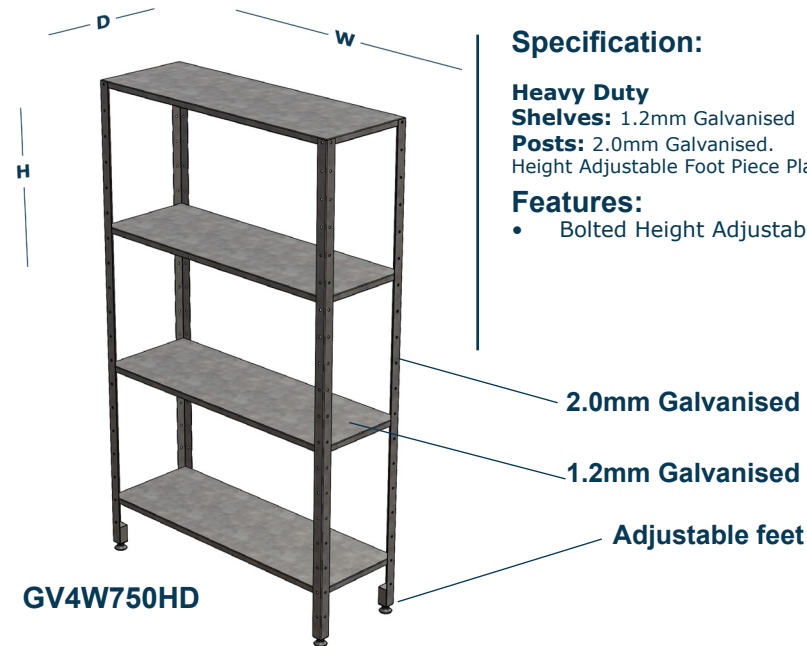
**HEAVY DUTY**

Code	Description	Dimensions W x D x H
SS4W750HD	Shelving System 4 Tier.	750mm x 400mm x 1900mm
4W750SSHD	Spare Shelf Incl. Bolts	750mm x 400mm
SS4W900HD	Shelving System 4 Tier.	900mm x 400mm x 1900mm
4W900SSHD	Spare Shelf Incl. Bolts	900mm x 400mm
SS4W1150HD	Shelving System 4 Tier.	1150mm x 400mm x 1900mm
4W1150SSHD	Spare Shelf Incl. Bolts	1150mm x 400mm

SS5W750HD	Shelving System 4 Tier.	750mm x 500mm x 1900mm
5W750SSHD	Spare Shelf Incl. Bolts	750mm x 500mm
SS5W900HD	Shelving System 4 Tier.	900mm x 500mm x 1900mm
5W900SSHD	Spare Shelf Incl. Bolts	900mm x 500mm
SS5W1150HD	Shelving System 4 Tier.	1150mm x 500mm x 1900mm
5W1150SSHD	Spare Shelf Incl. Bolts	1150mm x 500mm

Specification:**Heavy Duty****Shelves:** 1.2mm Galvanised**Posts:** 2.0mm Galvanised.
Height Adjustable Foot Piece Plastic.**Features:**

- Bolted Height Adjustable Shelves

**HEAVY DUTY**

Code	Description	Dimensions W x D x H
GV4W750HD	Shelving System 4 Tier.	750mm x 400mm x 1900mm
4W750GVHD	Spare Shelf Incl. Bolts	750mm x 400mm
GV4W900HD	Shelving System 4 Tier.	900mm x 400mm x 1900mm
4W900GVHD	Spare Shelf Incl. Bolts	900mm x 400mm
GV4W1150HD	Shelving System 4 Tier.	1150mm x 400mm x 1900mm
4W1150GVHD	Spare Shelf Incl. Bolts	1150mm x 400mm

GV5W750HD	Shelving System 4 Tier.	750mm x 500mm x 1900mm
5W750GVHD	Spare Shelf Incl. Bolts	750mm x 500mm
GV5W900HD	Shelving System 4 Tier.	900mm x 500mm x 1900mm
5W900GVHD	Spare Shelf Incl. Bolts	900mm x 500mm
GV5W1150HD	Shelving System 4 Tier.	1150mm x 500mm x 1900mm
5W1150GVHD	Spare Shelf Incl. Bolts	1150mm x 500mm

POLAR WELL DROP IN REFRIGERATED

Specification:

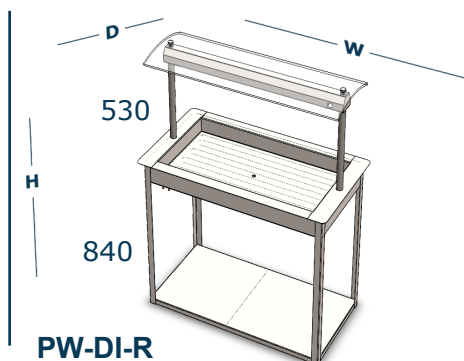
Body: Grade 304 Stainless Steel 1.2mm.

Base/ Service cover: 1.2mm Galvanised.

Under Sheet: 1.2mm Galvanised Reinforced.

Features:

- Full Stainless Steel
- Polyurethane Insulated Ice Well Grade 304 with 50mm Waste Fitting.
- LED Light
- Refrigeration unit included.



Code	Description	Dimensions W x D x H
PW9-DI-R	Polar Well Drop In Refrigerated	900mm x 650mm x 1370mm
PW12-DI-R	Polar Well Drop In Refrigerated	1200mm x 650mm x 1370mm
PW15-DI-R	Polar Well Drop In Refrigerated	1530mm x 650mm x 1370mm
PW18-DI-R	Polar Well Drop In Refrigerated	1800mm x 650mm x 1370mm

HOT PLATE ON HOT COUNTER

Specification:

Hot Plates: Mild Steel 8mm.

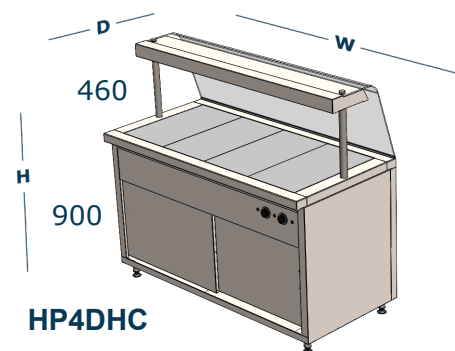
Work Top: Grade 430 Stainless Steel 1.2mm.

Body: Grade 430 Stainless Steel 0.9mm.

Under Sheet: 1.2mm Galvanised Reinforced.

Features:

- Full Stainless Steel
- Lamp with Glass Cover
- Hot Counter Below.
- LED Light.
- Adjustable Feet.
- 30°C - 110°C control thermostats.



Code	Description	Dimensions W x D x H
HP2D-HC	Hot Plate 2 Division - Table Top.	900mm x 650mm x 1360mm
HP3D-HC	Hot Plate 3 Division - Table Top.	1200mm x 650mm x 1360mm
HP4D-HC	Hot Plate 4 Division - Table Top.	1530mm x 650mm x 1360mm
HP5D-HC	Hot Plate 5 Division - Table Top.	1800mm x 750mm x 1360mm

HOT PLATE TABLE TOP

Specification:

Hot Plates: Mild Steel 8mm.

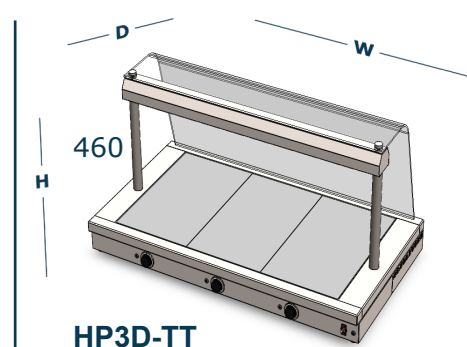
Work Top: Grade 430 Stainless Steel 2.0mm.

Body: Grade 430 Stainless Steel 0.9mm.

Service Cover: 1.2mm Galvanised.

Features:

- Full Stainless Steel
- Lamp with Glass Sneeze guard.
- LED Light.
- 30°C - 110°C control thermostats.



Code	Description	Dimensions W x D x H
HP2D-TT	Hot Plate 2 Division - Table Top.	900mm x 650mm x 600mm
HP3D-TT	Hot Plate 3 Division - Table Top.	1200mm x 650mm x 600mm
HP4D-TT	Hot Plate 4 Division - Table Top.	1530mm x 650mm x 600mm
HP5D-TT	Hot Plate 5 Division - Table Top.	1800mm x 750mm x 600mm

HOT PLATE DROP IN

Specification:

Hot Plates: Mild Steel 8mm.

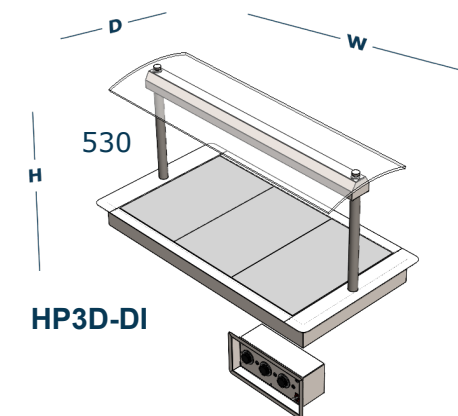
Work Top: Grade 430 Stainless Steel 2.0mm.

Body: Grade 430 Stainless Steel 0.9mm.

Service Cover: 1.2mm Galvanised.

Features:

- Full Stainless Steel
- Lamp with Glass Cover
- LED Light.
- 30°C - 110°C control thermostats.
- Control box included



Code	Description	Dimensions W x D x H
HP2D-DI	Hot Plate 2 Division - Drop In.	900mm x 650mm x 640mm
HP3D-DI	Hot Plate 3 Division - Drop In.	1200mm x 650mm x 640mm
HP4D-DI	Hot Plate 4 Division - Drop In.	1530mm x 650mm x 640mm
HP5D-DI	Hot Plate 5 Division - Drop In.	1800mm x 750mm x 640mm